

Datasheet for ABIN1535873  
**anti-OR2B2 antibody (AA 241-290)**[Go to Product page](#)

## 2 Images

## Overview

|                      |   |
|----------------------|---|
| Quantity:            | 100 µg  |
| Target:              | OR2B2   |
| Binding Specificity: | AA 241-290  |
| Reactivity:          | Human   |
| Host:                | Rabbit  |
| Clonality:           | Polyclonal  |
| Conjugate:           | This OR2B2 antibody is un-conjugated                  |
| Application:         | Western Blotting (WB), ELISA, Immunofluorescence (IF) |

## Product Details

|               |   |
|---------------|---|
| Immunogen:    | The antiserum was produced against synthesized peptide derived from human OR2B2.            |
| Isotype:      | IgG   |
| Specificity:  | OR2B2 Antibody detects endogenous levels of total OR2B2 protein.                            |
| Purification: | The antibody was purified from rabbit antiserum by affinity-chromatography using immunogen. |
| Purity:       | > 95 %  |

## Target Details

|                   |   |
|-------------------|---|
| Target:           | OR2B2   |
| Alternative Name: | OR2B2 ( <a href="#">OR2B2 Products</a> )  |
| Background:       | Synonyms: Olfactory receptor 2B2, Olfactory receptor 6-1, OR6-1, Hs6M1-10, OR2B2, OR2B9 |

## Target Details

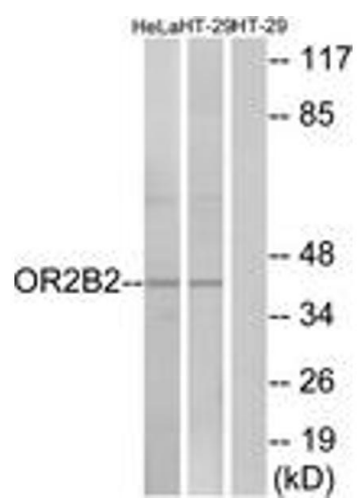
|                   |                         |
|-------------------|-------------------------|
|                   | NCBI Gene Symbol: OR2B2 |
| Molecular Weight: | 40 kDa                  |
| Gene ID:          | 81697                   |
| UniProt:          | <a href="#">Q9GZK3</a>  |

## Application Details

|                    |   |
|--------------------|---|
| Application Notes: | WB: 1:500~1:1000 IF: 1:100~1:500 ELISA: 1:10000     |
| Comment:           | Unigene-Number: Hs.307111 (NCBI Gene Symbol: OR2B2) |
| Restrictions:      | For Research Use only                               |

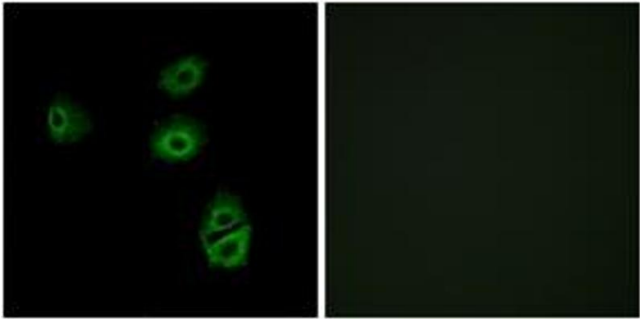
## Handling

|                    |   |
|--------------------|---|
| Format:            | Liquid  |
| Concentration:     | 1 mg/mL   |
| Buffer:            | phosphate buffered saline (without Mg <sup>2+</sup> and Ca <sup>2+</sup> ), pH 7.4, 150 mM NaCl, 0.02 % sodium azide and 50 % glycerol. |
| Preservative:      | Sodium azide  |
| Precaution of Use: | This product contains sodium azide: a POISONOUS AND HAZARDOUS SUBSTANCE which should be handled by trained staff only.                  |
| Storage:           | -20 °C  |
| Storage Comment:   | Stable at -20°C for at least 1 year.  |
| Expiry Date:       | 12 months   |



### Western Blotting

**Image 1.** Western blot analysis of extracts from HeLa/HT-29 cells, using OR2B2 Antibody. The lane on the right is treated with the synthesized peptide.



### Immunofluorescence

**Image 2.** Immunofluorescence analysis of A549 cells, using OR2B2 Antibody. The picture on the right is treated with the synthesized peptide.