

Datasheet for ABIN1535877

**anti-Olfactory Receptor, Family 2, Subfamily D, Member 2  
(OR2D2) (AA 231-280) antibody**[Go to Product page](#)**1** Image

## Overview

Quantity:	100 µL
Target:	Olfactory Receptor, Family 2, Subfamily D, Member 2 (OR2D2)
Binding Specificity:	AA 231-280
Reactivity:	Human
Host:	Rabbit
Clonality:	Polyclonal
Conjugate:	Un-conjugated
Application:	ELISA, Immunofluorescence (IF)

## Product Details

Immunogen:	The antiserum was produced against synthesized peptide derived from human OR2D2.
Isotype:	IgG
Specificity:	OR2D2 Antibody detects endogenous levels of total OR2D2 protein.
Purification:	The antibody was purified from rabbit antiserum by affinity-chromatography using immunogen.
Purity:	> 95 %

## Target Details

Target:	Olfactory Receptor, Family 2, Subfamily D, Member 2 (OR2D2)
Alternative Name:	OR2D2 ( <a href="#">OR2D2 Products</a> )
Background:	Synonyms: Olfactory receptor 2D2, Olfactory receptor OR11-88, Olfactory receptor 11-610,

## Target Details

---

OR11-610, HB2, OR2D2, OR2D1

NCBI Gene Symbol: OR2D2

---

Molecular Weight: 34 kDa

---

Gene ID: 120776

---

OMIM: 608494

---

UniProt: [Q9H210](#)

---

## Application Details

---

Application Notes: IF: 1:100~1:500 ELISA: 1:5000

---

Comment: Unigene-Number: Hs.690210 (NCBI Gene Symbol: OR2D2)

---

Restrictions: For Research Use only

---

## Handling

---

Format: Liquid

---

Concentration: 1 mg/mL

---

Buffer: phosphate buffered saline (without Mg<sup>2+</sup> and Ca<sup>2+</sup>), pH 7.4, 150 mM NaCl, 0.02 % sodium azide and 50 % glycerol.

---

Preservative: Sodium azide

---

Precaution of Use: This product contains sodium azide: a POISONOUS AND HAZARDOUS SUBSTANCE which should be handled by trained staff only.

---

Storage: -20 °C

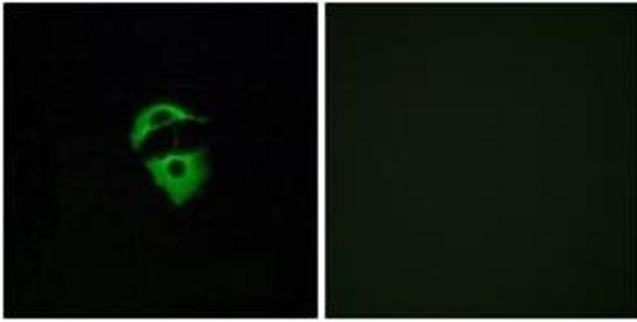
---

Storage Comment: Stable at -20°C for at least 1 year.

---

Expiry Date: 12 months

---



#### Immunofluorescence

**Image 1.** Immunofluorescence analysis of A549 cells, using OR2D2 Antibody. The picture on the right is treated with the synthesized peptide.