

Datasheet for ABIN1535879
anti-OR2G2 antibody (AA 241-290)

2 Images

[Go to Product page](#)

Overview

Quantity:	100 µg
Target:	OR2G2
Binding Specificity:	AA 241-290
Reactivity:	Human
Host:	Rabbit
Clonality:	Polyclonal
Application:	Western Blotting (WB), ELISA, Immunofluorescence (IF)

Product Details

Immunogen:	The antiserum was produced against synthesized peptide derived from human OR2G2.
Isotype:	IgG
Specificity:	OR2G2 Antibody detects endogenous levels of total OR2G2 protein.
Purification:	The antibody was purified from rabbit antiserum by affinity-chromatography using immunogen.
Purity:	> 95 %

Target Details

Target:	OR2G2
Alternative Name:	OR2G2 (OR2G2 Products)
Background:	Synonyms: Olfactory receptor 2G2, Olfactory receptor OR1-32, OR2G2, NCBI Gene Symbol: OR2G2

Target Details

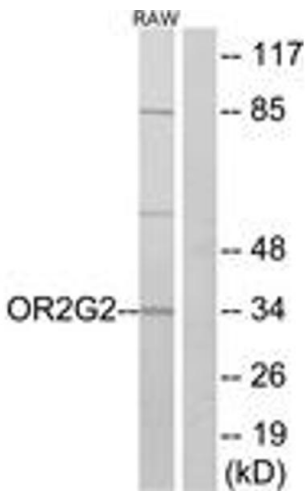
Molecular Weight:	35 kDa
Gene ID:	81470
UniProt:	Q8NGZ5

Application Details

Application Notes:	WB: 1:500~1:1000 IF: 1:100~1:500 ELISA: 1:20000
Comment:	Unigene-Number: Hs.690208 (NCBI Gene Symbol: OR2G2)
Restrictions:	For Research Use only

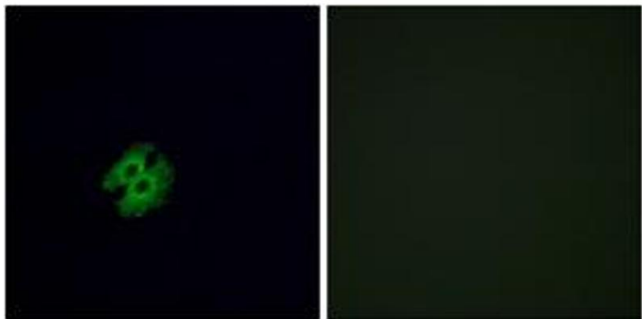
Handling

Format:	Liquid
Concentration:	1 mg/mL
Buffer:	phosphate buffered saline (without Mg ²⁺ and Ca ²⁺), pH 7.4, 150 mM NaCl, 0.02 % sodium azide and 50 % glycerol.
Preservative:	Sodium azide
Precaution of Use:	This product contains sodium azide: a POISONOUS AND HAZARDOUS SUBSTANCE which should be handled by trained staff only.
Storage:	-20 °C
Storage Comment:	Stable at -20°C for at least 1 year.
Expiry Date:	12 months



Western Blotting

Image 1. Western blot analysis of extracts from RAW264.7 cells, using OR2G2 Antibody. The lane on the right is treated with the synthesized peptide.



Immunofluorescence

Image 2. Immunofluorescence analysis of A549 cells, using OR2G2 Antibody. The picture on the right is treated with the synthesized peptide.