

Datasheet for ABIN1535886
anti-OR2L5 antibody (AA 241-290)[Go to Product page](#)

2 Images

Overview

Quantity:	100 µg
Target:	OR2L5
Binding Specificity:	AA 241-290
Reactivity:	Human
Host:	Rabbit
Clonality:	Polyclonal
Conjugate:	This OR2L5 antibody is un-conjugated
Application:	Western Blotting (WB), ELISA, Immunofluorescence (IF)

Product Details

Immunogen:	The antiserum was produced against synthesized peptide derived from human OR2L5.
Isotype:	IgG
Specificity:	OR2L5 Antibody detects endogenous levels of total OR2L5 protein.
Purification:	The antibody was purified from rabbit antiserum by affinity-chromatography using immunogen.
Purity:	> 95 %

Target Details

Target:	OR2L5
Alternative Name:	OR2L5 (OR2L5 Products)
Background:	Synonyms: Olfactory receptor 2L5, Olfactory receptor OR1-53, OR2L5, OR2L11,

Target Details

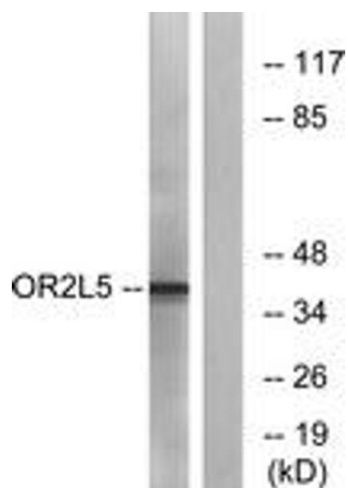
	NCBI Gene Symbol: OR2L5
Molecular Weight:	35 kDa
Gene ID:	81466
UniProt:	Q8NG80

Application Details

Application Notes:	WB: 1:500~1:1000 IF: 1:100~1:500 ELISA: 1:20000
Comment:	Unigene-Number: Hs.381312 (NCBI Gene Symbol: OR2L5)
Restrictions:	For Research Use only

Handling

Format:	Liquid
Concentration:	1 mg/mL
Buffer:	phosphate buffered saline (without Mg2+ and Ca2+), pH 7.4, 150 mM NaCl, 0.02 % sodium azide and 50 % glycerol.
Preservative:	Sodium azide
Precaution of Use:	This product contains sodium azide: a POISONOUS AND HAZARDOUS SUBSTANCE which should be handled by trained staff only.
Storage:	-20 °C
Storage Comment:	Stable at -20°C for at least 1 year.
Expiry Date:	12 months



Western Blotting

Image 1. Western blot analysis of extracts from COLO cells, using OR2L5 Antibody. The lane on the right is treated with the synthesized peptide.



Immunofluorescence

Image 2. Immunofluorescence analysis of A549 cells, using OR2L5 Antibody. The picture on the right is treated with the synthesized peptide.