

Datasheet for ABIN1535887
anti-OR2M2 antibody (AA 281-330)

2 Images

[Go to Product page](#)

Overview

Quantity:	100 µg
Target:	OR2M2
Binding Specificity:	AA 281-330
Reactivity:	Human
Host:	Rabbit
Clonality:	Polyclonal
Conjugate:	This OR2M2 antibody is un-conjugated
Application:	Western Blotting (WB), ELISA, Immunofluorescence (IF)

Product Details

Immunogen:	The antiserum was produced against synthesized peptide derived from human OR2M2.
Isotype:	IgG
Specificity:	OR2M2 Antibody detects endogenous levels of total OR2M2 protein.
Purification:	The antibody was purified from rabbit antiserum by affinity-chromatography using immunogen.
Purity:	> 95 %

Target Details

Target:	OR2M2
Alternative Name:	OR2M2 (OR2M2 Products)
Background:	Synonyms: Olfactory receptor 2M2, OST423, OR2M2

Target Details

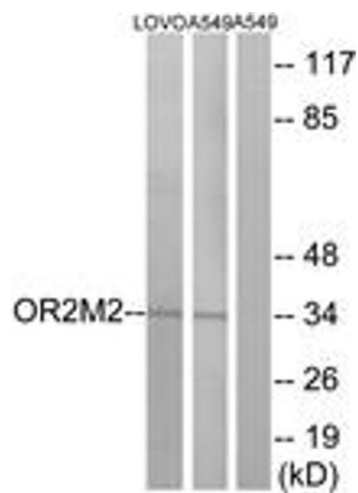
	NCBI Gene Symbol: OR2M2
Molecular Weight:	39 kDa
Gene ID:	391194
UniProt:	Q96R28

Application Details

Application Notes:	WB: 1:500~1:1000 IF: 1:100~1:500 ELISA: 1:10000
Comment:	Unigene-Number: Hs.534728 (NCBI Gene Symbol: OR2M2)
Restrictions:	For Research Use only

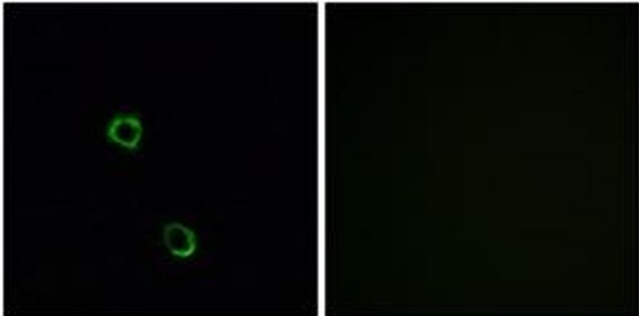
Handling

Format:	Liquid
Concentration:	1 mg/mL
Buffer:	phosphate buffered saline (without Mg ²⁺ and Ca ²⁺), pH 7.4, 150 mM NaCl, 0.02 % sodium azide and 50 % glycerol.
Preservative:	Sodium azide
Precaution of Use:	This product contains sodium azide: a POISONOUS AND HAZARDOUS SUBSTANCE which should be handled by trained staff only.
Storage:	-20 °C
Storage Comment:	Stable at -20°C for at least 1 year.
Expiry Date:	12 months



Western Blotting

Image 1. Western blot analysis of extracts from LOVO/A549 cells, using OR2M2 Antibody. The lane on the right is treated with the synthesized peptide.



Immunofluorescence

Image 2. Immunofluorescence analysis of MCF7 cells, using OR2M2 Antibody. The picture on the right is treated with the synthesized peptide.