

Datasheet for ABIN1535890
anti-OR2T1 antibody (AA 231-280)[Go to Product page](#)

2 Images

Overview

Quantity:	100 µg
Target:	OR2T1
Binding Specificity:	AA 231-280
Reactivity:	Human
Host:	Rabbit
Clonality:	Polyclonal
Conjugate:	This OR2T1 antibody is un-conjugated
Application:	Western Blotting (WB), ELISA, Immunofluorescence (IF)

Product Details

Immunogen:	The antiserum was produced against synthesized peptide derived from human OR2T1.
Isotype:	IgG
Specificity:	OR2T1 Antibody detects endogenous levels of total OR2T1 protein.
Purification:	The antibody was purified from rabbit antiserum by affinity-chromatography using immunogen.
Purity:	> 95 %

Target Details

Target:	OR2T1
Alternative Name:	OR2T1 (OR2T1 Products)
Background:	Synonyms: Olfactory receptor 2T1, Olfactory receptor OR1-61, Olfactory receptor 1-25, OR1-25,

Target Details

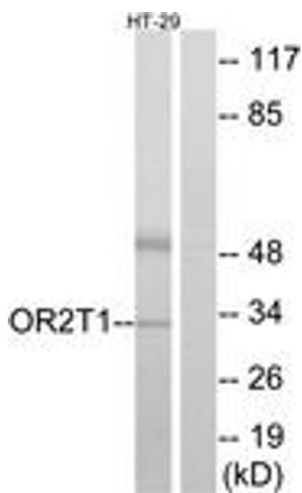
	OR2T1 NCBI Gene Symbol: OR2T1
Molecular Weight:	35 kDa
Gene ID:	26696
UniProt:	O43869

Application Details

Application Notes:	WB: 1:500~1:1000 IF: 1:100~1:500 ELISA: 1:10000
Comment:	Unigene-Number: Hs.626885, (NCBI Gene Symbol: OR2T1)
Restrictions:	For Research Use only

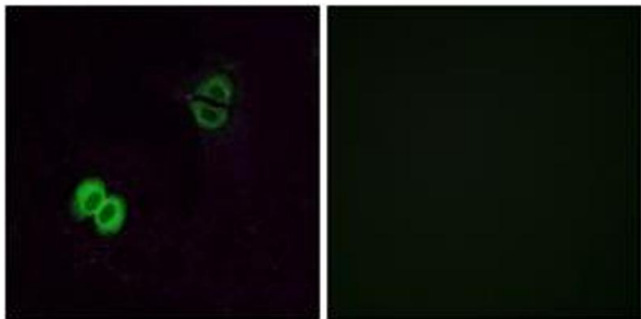
Handling

Format:	Liquid
Concentration:	1 mg/mL
Buffer:	phosphate buffered saline (without Mg ²⁺ and Ca ²⁺), pH 7.4, 150 mM NaCl, 0.02 % sodium azide and 50 % glycerol.
Preservative:	Sodium azide
Precaution of Use:	This product contains sodium azide: a POISONOUS AND HAZARDOUS SUBSTANCE which should be handled by trained staff only.
Storage:	-20 °C
Storage Comment:	Stable at -20°C for at least 1 year.
Expiry Date:	12 months



Western Blotting

Image 1. Western blot analysis of extracts from HT-29 cells, using OR2T1 Antibody. The lane on the right is treated with the synthesized peptide.



Immunofluorescence

Image 2. Immunofluorescence analysis of A549 cells, using OR2T1 Antibody. The picture on the right is treated with the synthesized peptide.