

Datasheet for ABIN1535893
anti-OR2Y1 antibody (AA 161-210)

2 Images

[Go to Product page](#)

Overview

Quantity:	100 µg
Target:	OR2Y1
Binding Specificity:	AA 161-210
Reactivity:	Human
Host:	Rabbit
Clonality:	Polyclonal
Conjugate:	This OR2Y1 antibody is un-conjugated
Application:	Western Blotting (WB), ELISA, Immunofluorescence (IF)

Product Details

Immunogen:	The antiserum was produced against synthesized peptide derived from human OR2Y1.
Isotype:	IgG
Specificity:	OR2Y1 Antibody detects endogenous levels of total OR2Y1 protein.
Purification:	The antibody was purified from rabbit antiserum by affinity-chromatography using immunogen.
Purity:	> 95 %

Target Details

Target:	OR2Y1
Alternative Name:	OR2Y1 (OR2Y1 Products)
Background:	Synonyms: , Olfactory receptor 2Y1, Olfactory receptor OR5-2, OR2Y1

Target Details

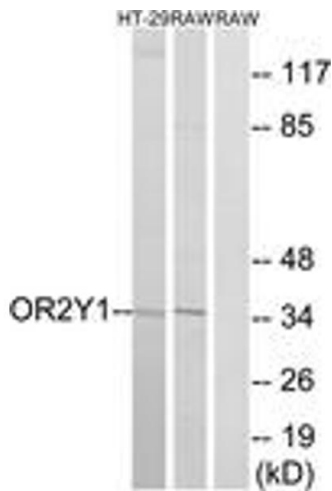
	NCBI Gene Symbol: OR2Y1
Molecular Weight:	34 kDa
Gene ID:	134083
UniProt:	Q8NGV0

Application Details

Application Notes:	WB: 1:500~1:1000 IF: 1:100~1:500 ELISA: 1:10000
Comment:	Unigene-Number: Hs.554719 (NCBI Gene Symbol: OR2Y1)
Restrictions:	For Research Use only

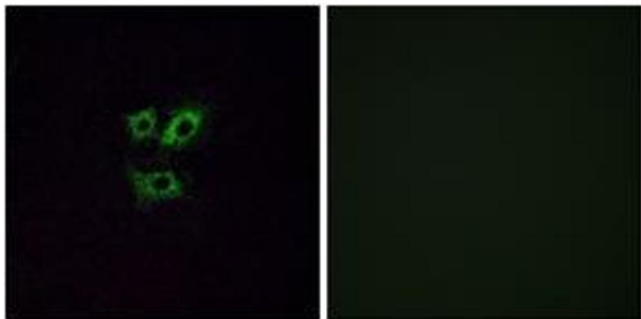
Handling

Format:	Liquid
Concentration:	1 mg/mL
Buffer:	phosphate buffered saline (without Mg2+ and Ca2+), pH 7.4, 150 mM NaCl, 0.02 % sodium azide and 50 % glycerol.
Preservative:	Sodium azide
Precaution of Use:	This product contains sodium azide: a POISONOUS AND HAZARDOUS SUBSTANCE which should be handled by trained staff only.
Storage:	-20 °C
Storage Comment:	Stable at -20°C for at least 1 year.
Expiry Date:	12 months



Western Blotting

Image 1. Western blot analysis of extracts from RAW264.7/HT-29 cells, using OR2Y1 Antibody. The lane on the right is treated with the synthesized peptide.



Immunofluorescence

Image 2. Immunofluorescence analysis of A549 cells, using OR2Y1 Antibody. The picture on the right is treated with the synthesized peptide.