

Datasheet for ABIN1535900
anti-OR4C3 antibody (AA 196-245)

2 Images

[Go to Product page](#)

Overview

Quantity:	100 µg
Target:	OR4C3
Binding Specificity:	AA 196-245
Reactivity:	Human
Host:	Rabbit
Clonality:	Polyclonal
Conjugate:	This OR4C3 antibody is un-conjugated
Application:	ELISA, Western Blotting (WB), Immunofluorescence (IF)

Product Details

Immunogen:	The antiserum was produced against synthesized peptide derived from human OR4C3.
Isotype:	IgG
Specificity:	OR4C3 Antibody detects endogenous levels of total OR4C3 protein.
Purification:	The antibody was purified from rabbit antiserum by affinity-chromatography using immunogen.
Purity:	> 95 %

Target Details

Target:	OR4C3
Alternative Name:	OR4C3 (OR4C3 Products)
Background:	Synonyms: Olfactory receptor 4C3, Olfactory receptor OR11-98, OR4C3,

Target Details

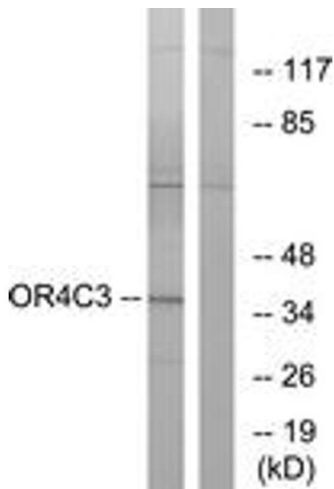
	NCBI Gene Symbol: OR4C3
Molecular Weight:	33 kDa
Gene ID:	256144
UniProt:	Q8NH37

Application Details

Application Notes:	WB: 1:500~1:1000 IF: 1:100~1:500 ELISA: 1:20000
Comment:	Unigene-Number: Hs.553656 (NCBI Gene Symbol: OR4C3)
Restrictions:	For Research Use only

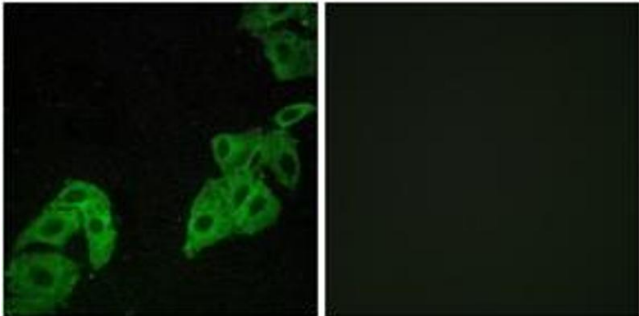
Handling

Format:	Liquid
Concentration:	1 mg/mL
Buffer:	phosphate buffered saline (without Mg ²⁺ and Ca ²⁺), pH 7.4, 150 mM NaCl, 0.02 % sodium azide and 50 % glycerol.
Preservative:	Sodium azide
Precaution of Use:	This product contains sodium azide: a POISONOUS AND HAZARDOUS SUBSTANCE which should be handled by trained staff only.
Storage:	-20 °C
Storage Comment:	Stable at -20°C for at least 1 year.
Expiry Date:	12 months



Western Blotting

Image 1. Western blot analysis of extracts from K562 cells, using OR4C3 Antibody. The lane on the right is treated with the synthesized peptide.



Immunofluorescence

Image 2. Immunofluorescence analysis of A549 cells, using OR4C3 Antibody. The picture on the right is treated with the synthesized peptide.