

Datasheet for ABIN1535901
anti-OR4C6 antibody (AA 193-242)

2 Images

[Go to Product page](#)

Overview

Quantity:	100 µg
Target:	OR4C6
Binding Specificity:	AA 193-242
Reactivity:	Human
Host:	Rabbit
Clonality:	Polyclonal
Application:	Western Blotting (WB), ELISA, Immunofluorescence (IF)

Product Details

Immunogen:	The antiserum was produced against synthesized peptide derived from human OR4C6.
Isotype:	IgG
Specificity:	OR4C6 Antibody detects endogenous levels of total OR4C6 protein.
Purification:	The antibody was purified from rabbit antiserum by affinity-chromatography using immunogen.
Purity:	> 95 %

Target Details

Target:	OR4C6
Alternative Name:	OR4C6 (OR4C6 Products)
Background:	Synonyms: Olfactory receptor 4C6, Olfactory receptor OR11-138, OR4C6 NCBI Gene Symbol: OR4C6

Target Details

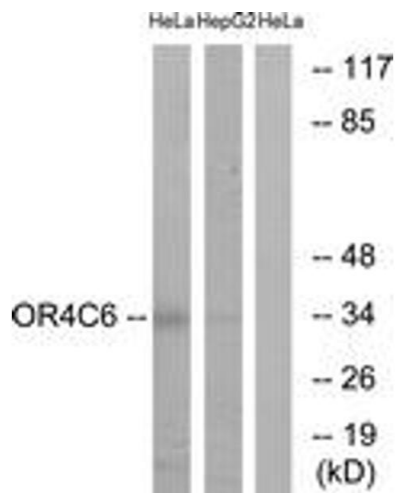
Molecular Weight:	34 kDa
Gene ID:	219432
UniProt:	Q8NH72

Application Details

Application Notes:	WB: 1:500~1:1000 IF: 1:100~1:500 ELISA: 1:40000
Comment:	Unigene-Number: Hs.511921 (NCBI Gene Symbol: OR4C6)
Restrictions:	For Research Use only

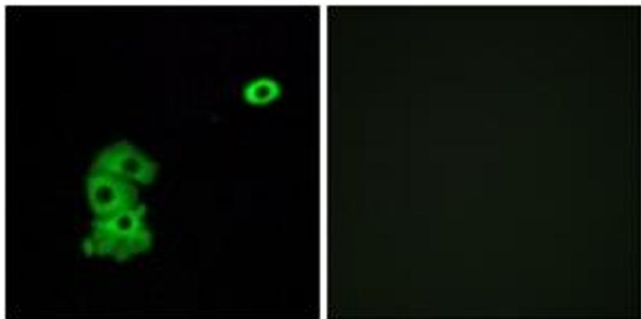
Handling

Format:	Liquid
Concentration:	1 mg/mL
Buffer:	phosphate buffered saline (without Mg ²⁺ and Ca ²⁺), pH 7.4, 150 mM NaCl, 0.02 % sodium azide and 50 % glycerol.
Preservative:	Sodium azide
Precaution of Use:	This product contains sodium azide: a POISONOUS AND HAZARDOUS SUBSTANCE which should be handled by trained staff only.
Storage:	-20 °C
Storage Comment:	Stable at -20°C for at least 1 year.
Expiry Date:	12 months



Western Blotting

Image 1. Western blot analysis of extracts from HeLa/HepG2 cells, using OR4C6 Antibody. The lane on the right is treated with the synthesized peptide.



Immunofluorescence

Image 2. Immunofluorescence analysis of A549 cells, using OR4C6 Antibody. The picture on the right is treated with the synthesized peptide.