

Datasheet for ABIN1535905  
**anti-OR4C16 antibody (AA 261-310)**[Go to Product page](#)

## 2 Images

## Overview

Quantity:	100 µg
Target:	OR4C16
Binding Specificity:	AA 261-310
Reactivity:	Human
Host:	Rabbit
Clonality:	Polyclonal
Conjugate:	This OR4C16 antibody is un-conjugated
Application:	Western Blotting (WB), ELISA, Immunofluorescence (IF)

## Product Details

Immunogen:	The antiserum was produced against synthesized peptide derived from human OR4C16.
Isotype:	IgG
Specificity:	OR4C16 Antibody detects endogenous levels of total OR4C16 protein.
Purification:	The antibody was purified from rabbit antiserum by affinity-chromatography using immunogen.
Purity:	> 95 %

## Target Details

Target:	OR4C16
Alternative Name:	OR4C16 ( <a href="#">OR4C16 Products</a> )
Background:	Synonyms: Olfactory receptor 4C16, Olfactory receptor OR11-135, OR4C16

## Target Details

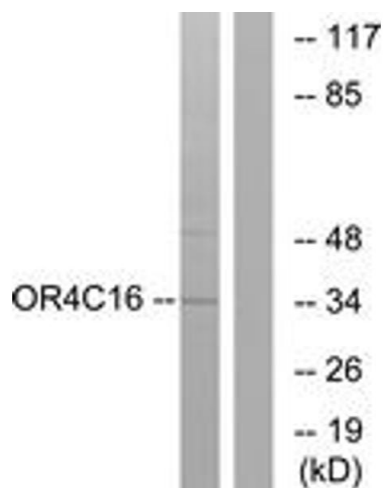
	NCBI Gene Symbol: OR4C16
Molecular Weight:	34 kDa
Gene ID:	219428
UniProt:	<a href="#">Q8NGL9</a>

## Application Details

Application Notes:	WB: 1:500~1:1000 IF: 1:100~1:500 ELISA: 1:20000
Comment:	Unigene-Number: Hs.553619 (NCBI Gene Symbol: OR4C16)
Restrictions:	For Research Use only

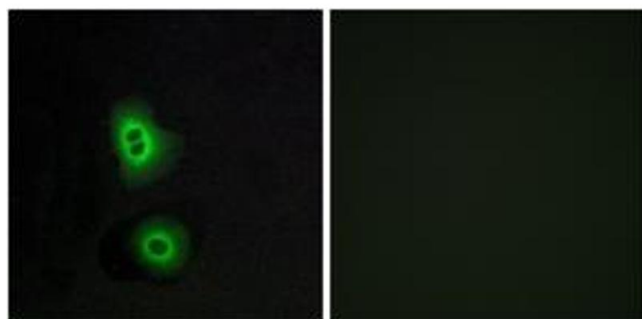
## Handling

Format:	Liquid
Concentration:	1 mg/mL
Buffer:	phosphate buffered saline (without Mg2+ and Ca2+), pH 7.4, 150 mM NaCl, 0.02 % sodium azide and 50 % glycerol.
Preservative:	Sodium azide
Precaution of Use:	This product contains sodium azide: a POISONOUS AND HAZARDOUS SUBSTANCE which should be handled by trained staff only.
Storage:	-20 °C
Storage Comment:	Stable at -20°C for at least 1 year.
Expiry Date:	12 months



#### Western Blotting

**Image 1.** Western blot analysis of extracts from LOVO cells, using OR4C16 Antibody. The lane on the right is treated with the synthesized peptide.



#### Immunofluorescence

**Image 2.** Immunofluorescence analysis of A549 cells, using OR4C16 Antibody. The picture on the right is treated with the synthesized peptide.