



Datasheet for ABIN1535907  
**anti-OR4D6 antibody (AA 260-309)**



[Go to Product page](#)

1 Image

Overview

Quantity:	100 µL
Target:	OR4D6
Binding Specificity:	AA 260-309
Reactivity:	Human
Host:	Rabbit
Clonality:	Polyclonal
Conjugate:	This OR4D6 antibody is un-conjugated
Application:	Western Blotting (WB), ELISA

Product Details

Immunogen:	The antiserum was produced against synthesized peptide derived from human OR4D6.
Isotype:	IgG
Specificity:	OR4D6 Antibody detects endogenous levels of total OR4D6 protein.
Purification:	The antibody was purified from rabbit antiserum by affinity-chromatography using immunogen.
Purity:	> 95 %

Target Details

Target:	OR4D6
Alternative Name:	OR4D6 ( <a href="#">OR4D6 Products</a> )
Background:	Synonyms: Olfactory receptor 4D6, Olfactory receptor OR11-250, OR4D6

## Target Details

---

NCBI Gene Symbol: OR4D6

Molecular Weight: 35 kDa

Gene ID: 219983

UniProt: [Q8NGJ1](#)

## Application Details

---

Application Notes: WB: 1:500~1:1000 ELISA: 1:20000

Comment: Unigene-Number: Hs.553650 (NCBI Gene Symbol: OR4D6)

Restrictions: For Research Use only

## Handling

---

Format: Liquid

Concentration: 1 mg/mL

Buffer: phosphate buffered saline (without Mg<sup>2+</sup> and Ca<sup>2+</sup>), pH 7.4, 150 mM NaCl, 0.02 % sodium azide and 50 % glycerol.

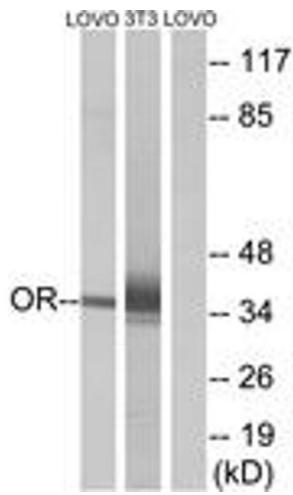
Preservative: Sodium azide

Precaution of Use: This product contains sodium azide: a POISONOUS AND HAZARDOUS SUBSTANCE which should be handled by trained staff only.

Storage: -20 °C

Storage Comment: Stable at -20°C for at least 1 year.

Expiry Date: 12 months



### Western Blotting

**Image 1.** Western blot analysis of extracts from LOVO/NIH-3T3 cells, using OR4D6 Antibody. The lane on the right is treated with the synthesized peptide.