

Datasheet for ABIN1535909
anti-OR4F4 antibody (AA 256-305)

2 Images

[Go to Product page](#)

Overview

Quantity:	100 µg
Target:	OR4F4
Binding Specificity:	AA 256-305
Reactivity:	Human
Host:	Rabbit
Clonality:	Polyclonal
Conjugate:	This OR4F4 antibody is un-conjugated
Application:	Western Blotting (WB), ELISA, Immunofluorescence (IF)

Product Details

Immunogen:	The antiserum was produced against synthesized peptide derived from human OR4F4.
Isotype:	IgG
Specificity:	OR4F4 Antibody detects endogenous levels of total OR4F4 protein.
Purification:	The antibody was purified from rabbit antiserum by affinity-chromatography using immunogen.
Purity:	> 95 %

Target Details

Target:	OR4F4
Alternative Name:	OR4F4 (OR4F4 Products)
Background:	Synonyms: Olfactory receptor 4F4, Olfactory receptor OR19-3, HS14a-1-A, OR4F4

Target Details

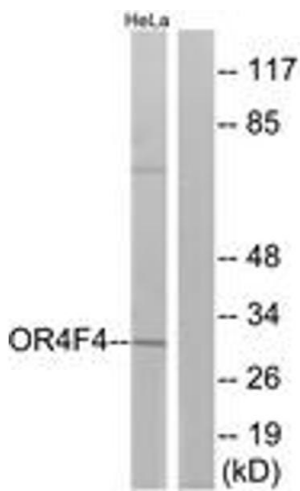
	NCBI Gene Symbol: OR4F4
Molecular Weight:	34 kDa
Gene ID:	26682
UniProt:	Q96R69

Application Details

Application Notes:	WB: 1:500~1:1000 IF: 1:100~1:500 ELISA: 1:20000
Comment:	Unigene-Number: Hs.554420 (NCBI Gene Symbol: OR4F4)
Restrictions:	For Research Use only

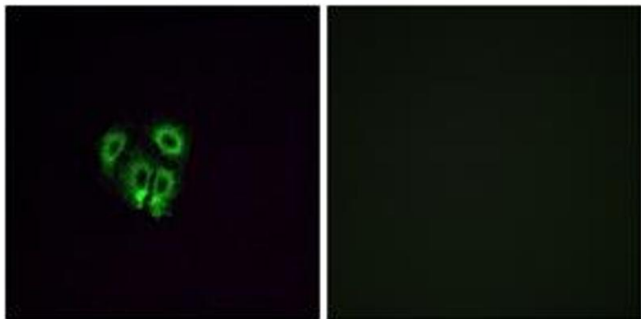
Handling

Format:	Liquid
Concentration:	1 mg/mL
Buffer:	phosphate buffered saline (without Mg ²⁺ and Ca ²⁺), pH 7.4, 150 mM NaCl, 0.02 % sodium azide and 50 % glycerol.
Preservative:	Sodium azide
Precaution of Use:	This product contains sodium azide: a POISONOUS AND HAZARDOUS SUBSTANCE which should be handled by trained staff only.
Storage:	-20 °C
Storage Comment:	Stable at -20°C for at least 1 year.
Expiry Date:	12 months



Western Blotting

Image 1. Western blot analysis of extracts from HeLa cells, using OR4F4 Antibody. The lane on the right is treated with the synthesized peptide.



Immunofluorescence

Image 2. Immunofluorescence analysis of A549 cells, using OR4F4 Antibody. The picture on the right is treated with the synthesized peptide.