

Datasheet for ABIN1535915
anti-OR4L1 antibody (AA 262-311)**2** Images[Go to Product page](#)

Overview

Quantity:	100 µg
Target:	OR4L1
Binding Specificity:	AA 262-311
Reactivity:	Human
Host:	Rabbit
Clonality:	Polyclonal
Conjugate:	This OR4L1 antibody is un-conjugated
Application:	Western Blotting (WB), ELISA, Immunofluorescence (IF)

Product Details

Immunogen:	The antiserum was produced against synthesized peptide derived from human OR4L1.
Isotype:	IgG
Specificity:	OR4L1 Antibody detects endogenous levels of total OR4L1 protein.
Purification:	The antibody was purified from rabbit antiserum by affinity-chromatography using immunogen.
Purity:	> 95 %

Target Details

Target:	OR4L1
Alternative Name:	OR4L1 (OR4L1 Products)
Background:	Synonyms: Olfactory receptor 4L1, Olfactory receptor OR14-28, OR4L1, OR4L2P,

Target Details

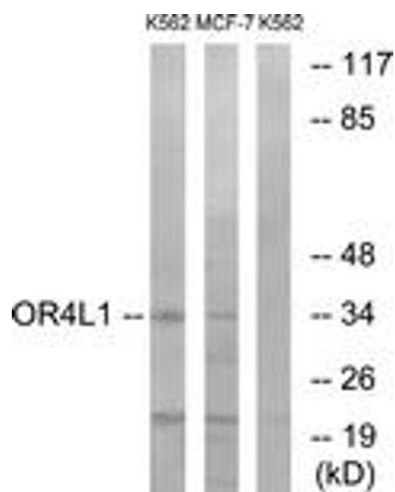
	NCBI Gene Symbol: OR4L1
Molecular Weight:	35 kDa
Gene ID:	122742
UniProt:	Q8NH43

Application Details

Application Notes:	WB: 1:500~1:1000 IF: 1:100~1:500 ELISA: 1:10000
Comment:	Unigene-Number: Hs.553574 (NCBI Gene Symbol: OR4L1)
Restrictions:	For Research Use only

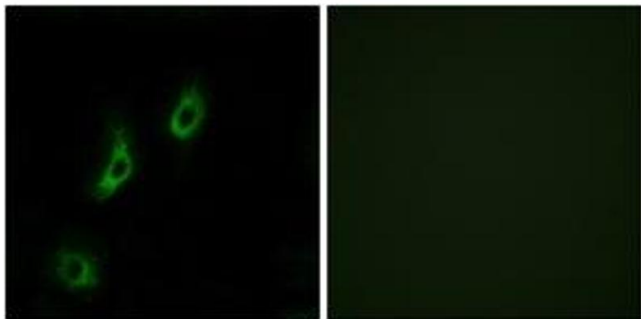
Handling

Format:	Liquid
Concentration:	1 mg/mL
Buffer:	phosphate buffered saline (without Mg ²⁺ and Ca ²⁺), pH 7.4, 150 mM NaCl, 0.02 % sodium azide and 50 % glycerol.
Preservative:	Sodium azide
Precaution of Use:	This product contains sodium azide: a POISONOUS AND HAZARDOUS SUBSTANCE which should be handled by trained staff only.
Storage:	-20 °C
Storage Comment:	Stable at -20°C for at least 1 year.
Expiry Date:	12 months



Western Blotting

Image 1. Western blot analysis of extracts from K562/MCF-7 cells, using OR4L1 Antibody. The lane on the right is treated with the synthesized peptide.



Immunofluorescence

Image 2. Immunofluorescence analysis of COS7 cells, using OR4L1 Antibody. The picture on the right is treated with the synthesized peptide.