

Datasheet for ABIN1535931
anti-OR5H6 antibody (AA 215-264)[Go to Product page](#)

2 Images

Overview

Quantity:	100 µg
Target:	OR5H6
Binding Specificity:	AA 215-264
Reactivity:	Human
Host:	Rabbit
Clonality:	Polyclonal
Conjugate:	This OR5H6 antibody is un-conjugated
Application:	ELISA, Western Blotting (WB), Immunofluorescence (IF)

Product Details

Immunogen:	The antiserum was produced against synthesized peptide derived from human OR5H6.
Isotype:	IgG
Specificity:	OR5H6 Antibody detects endogenous levels of total OR5H6 protein.
Purification:	The antibody was purified from rabbit antiserum by affinity-chromatography using immunogen.
Purity:	> 95 %

Target Details

Target:	OR5H6
Alternative Name:	OR5H6 (OR5H6 Products)
Background:	Synonyms: Olfactory receptor 5H6, Olfactory receptor OR3-11, OR5H6

Target Details

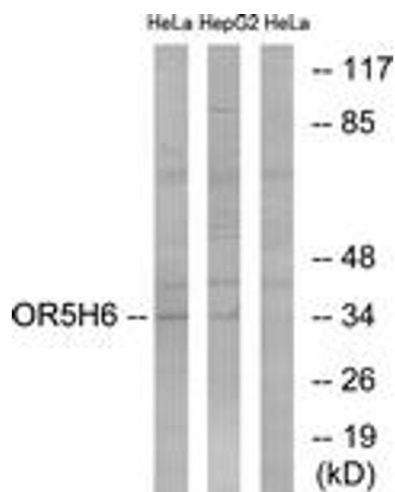
	NCBI Gene Symbol: OR5H6
Molecular Weight:	34 kDa
Gene ID:	79295
UniProt:	Q8NGV6

Application Details

Application Notes:	WB: 1:500~1:1000 IF: 1:100~1:500 ELISA: 1:10000
Comment:	Unigene-Number: Hs.554712 (NCBI Gene Symbol: OR5H6)
Restrictions:	For Research Use only

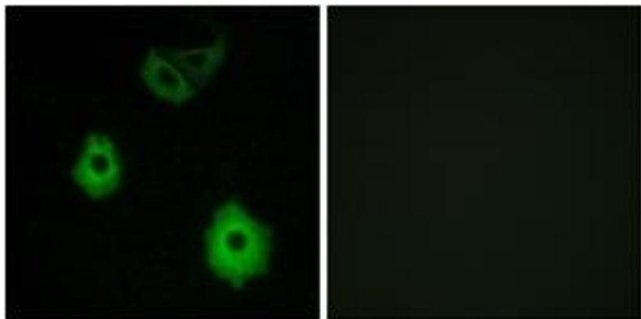
Handling

Format:	Liquid
Concentration:	1 mg/mL
Buffer:	phosphate buffered saline (without Mg2+ and Ca2+), pH 7.4, 150 mM NaCl, 0.02 % sodium azide and 50 % glycerol.
Preservative:	Sodium azide
Precaution of Use:	This product contains sodium azide: a POISONOUS AND HAZARDOUS SUBSTANCE which should be handled by trained staff only.
Storage:	-20 °C
Storage Comment:	Stable at -20°C for at least 1 year.
Expiry Date:	12 months



Western Blotting

Image 1. Western blot analysis of extracts from HeLa/HepG2 cells, using OR5H6 Antibody. The lane on the right is treated with the synthesized peptide.



Immunofluorescence

Image 2. Immunofluorescence analysis of A549 cells, using OR5H6 Antibody. The picture on the right is treated with the synthesized peptide.