



Datasheet for ABIN1535946
anti-OR6C2 antibody (AA 231-280)



[Go to Product page](#)

1 Image

Overview

Quantity:	100 µg
Target:	OR6C2
Binding Specificity:	AA 231-280
Reactivity:	Human
Host:	Rabbit
Clonality:	Polyclonal
Conjugate:	This OR6C2 antibody is un-conjugated
Application:	ELISA, Western Blotting (WB)

Product Details

Immunogen:	The antiserum was produced against synthesized peptide derived from human OR6C2.
Isotype:	IgG
Specificity:	OR6C2 Antibody detects endogenous levels of total OR6C2 protein.
Purification:	The antibody was purified from rabbit antiserum by affinity-chromatography using immunogen.
Purity:	> 95 %

Target Details

Target:	OR6C2
Alternative Name:	OR6C2 (OR6C2 Products)
Background:	Synonyms: HSA3

Target Details

NCBI Gene Symbol: OR6C2

Molecular Weight: 35 kDa

Gene ID: 341416

UniProt: [Q9NZP2](#)

Application Details

Application Notes: WB: 1:500~1:1000 ELISA: 1:1000

Comment: Unigene-Number: Hs.524483 (NCBI Gene Symbol: OR6C2)

Restrictions: For Research Use only

Handling

Format: Liquid

Concentration: 1 mg/mL

Buffer: phosphate buffered saline (without Mg²⁺ and Ca²⁺), pH 7.4, 150 mM NaCl, 0.02 % sodium azide and 50 % glycerol.

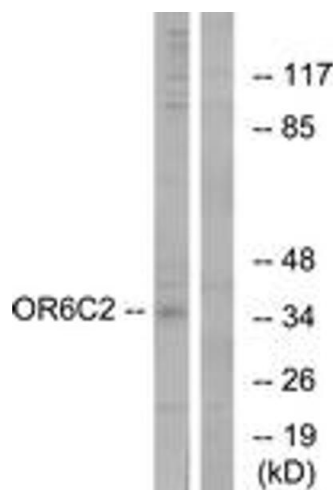
Preservative: Sodium azide

Precaution of Use: This product contains sodium azide: a POISONOUS AND HAZARDOUS SUBSTANCE which should be handled by trained staff only.

Storage: -20 °C

Storage Comment: Stable at -20°C for at least 1 year.

Expiry Date: 12 months



Western Blotting

Image 1. Western blot analysis of extracts from HT-29 cells, using OR6C2 Antibody. The lane on the right is treated with the synthesized peptide.