

Datasheet for ABIN1535952
anti-OR6T1 antibody (AA 264-313)[Go to Product page](#)

1 Image

Overview

Quantity:	100 µg
Target:	OR6T1
Binding Specificity:	AA 264-313
Reactivity:	Human
Host:	Rabbit
Clonality:	Polyclonal
Conjugate:	This OR6T1 antibody is un-conjugated
Application:	Western Blotting (WB), ELISA

Product Details

Immunogen:	The antiserum was produced against synthesized peptide derived from human OR6T1.
Isotype:	IgG
Specificity:	OR6T1 Antibody detects endogenous levels of total OR6T1 protein.
Purification:	The antibody was purified from rabbit antiserum by affinity-chromatography using immunogen.
Purity:	> 95 %

Target Details

Target:	OR6T1
Alternative Name:	OR6T1 (OR6T1 Products)
Background:	Synonyms: Olfactory receptor 6T1, Olfactory receptor OR11-277, OR6T1

Target Details

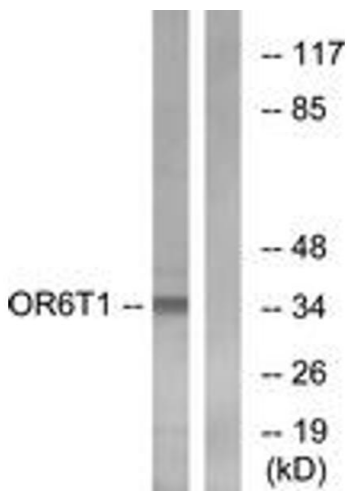
	NCBI Gene Symbol: OR6T1
Molecular Weight:	36 kDa
Gene ID:	219874
UniProt:	Q8NGN1

Application Details

Application Notes:	WB: 1:500~1:1000 ELISA: 1:10000
Comment:	Unigene-Number: Hs.553638 (NCBI Gene Symbol: OR6T1)
Restrictions:	For Research Use only

Handling

Format:	Liquid
Concentration:	1 mg/mL
Buffer:	phosphate buffered saline (without Mg ²⁺ and Ca ²⁺), pH 7.4, 150 mM NaCl, 0.02 % sodium azide and 50 % glycerol.
Preservative:	Sodium azide
Precaution of Use:	This product contains sodium azide: a POISONOUS AND HAZARDOUS SUBSTANCE which should be handled by trained staff only.
Storage:	-20 °C
Storage Comment:	Stable at -20°C for at least 1 year.
Expiry Date:	12 months



Western Blotting

Image 1. Western blot analysis of extracts from HeLa cells, using OR6T1 Antibody. The lane on the right is treated with the synthesized peptide.