

Datasheet for ABIN1535958
anti-OR8G1 antibody (AA 262-311)[Go to Product page](#)

1 Image

Overview

Quantity:	100 µg
Target:	OR8G1
Binding Specificity:	AA 262-311
Reactivity:	Human
Host:	Rabbit
Clonality:	Polyclonal
Conjugate:	This OR8G1 antibody is un-conjugated
Application:	Western Blotting (WB), ELISA

Product Details

Immunogen:	The antiserum was produced against synthesized peptide derived from human OR8G1.
Isotype:	IgG
Specificity:	OR8G1 Antibody detects endogenous levels of total OR8G1 protein.
Purification:	The antibody was purified from rabbit antiserum by affinity-chromatography using immunogen.
Purity:	> 95 %

Target Details

Target:	OR8G1
Alternative Name:	OR8G1 (OR8G1 Products)
Background:	Synonyms: Olfactory receptor OR11-281, Olfactory receptor TPCR25,

Target Details

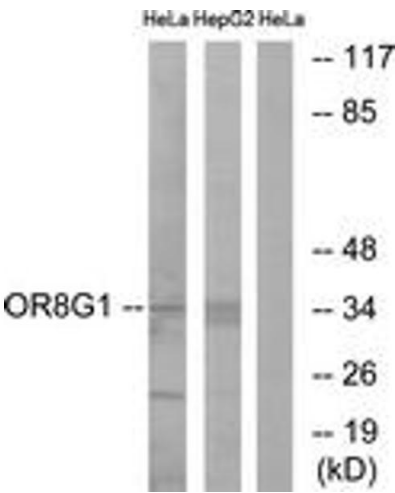
	NCBI Gene Symbol: OR8G1
Molecular Weight:	34 kDa
Gene ID:	26494
UniProt:	Q15617

Application Details

Application Notes:	WB: 1:500~1:1000 ELISA: 1:20000
Comment:	Unigene-Number: Hs.448172, Hs.725048 (NCBI Gene Symbol: OR8G1)
Restrictions:	For Research Use only

Handling

Format:	Liquid
Concentration:	1 mg/mL
Buffer:	phosphate buffered saline (without Mg2+ and Ca2+), pH 7.4, 150 mM NaCl, 0.02 % sodium azide and 50 % glycerol.
Preservative:	Sodium azide
Precaution of Use:	This product contains sodium azide: a POISONOUS AND HAZARDOUS SUBSTANCE which should be handled by trained staff only.
Storage:	-20 °C
Storage Comment:	Stable at -20°C for at least 1 year.
Expiry Date:	12 months



Western Blotting

Image 1. Western blot analysis of extracts from HeLa/HepG2 cells, using OR8G1 Antibody. The lane on the right is treated with the synthesized peptide.