

Datasheet for ABIN1535977

**anti-Purinergic Receptor P2Y, G-Protein Coupled, 13 (P2RY13)
(AA 209-258) antibody**[Go to Product page](#)**1** Image

Overview

Quantity:	100 µL
Target:	Purinergic Receptor P2Y, G-Protein Coupled, 13 (P2RY13)
Binding Specificity:	AA 209-258
Reactivity:	Human, Rat
Host:	Rabbit
Clonality:	Polyclonal
Conjugate:	Un-conjugated
Application:	Western Blotting (WB), ELISA

Product Details

Immunogen:	The antiserum was produced against synthesized peptide derived from human P2RY13.
Isotype:	IgG
Specificity:	P2RY13 Antibody detects endogenous levels of total P2RY13 protein.
Purification:	The antibody was purified from rabbit antiserum by affinity-chromatography using immunogen.
Purity:	> 95 %

Target Details

Target:	Purinergic Receptor P2Y, G-Protein Coupled, 13 (P2RY13)
Alternative Name:	P2RY13 (P2RY13 Products)
Background:	Synonyms: P2Y13, G-protein coupled receptor 86, G-protein coupled receptor 94

Target Details

NCBI Gene Symbol: P2RY13

Molecular Weight: 38 kDa

Gene ID: 53829

OMIM: 606380

UniProt: [Q9BPV8](#)

Pathways: [cAMP Metabolic Process](#)

Application Details

Application Notes: WB: 1:500~1:1000 ELISA: 1:20000

Comment: Unigene-Number: Hs.546396 (NCBI Gene Symbol: P2RY13)

Restrictions: For Research Use only

Handling

Format: Liquid

Concentration: 1 mg/mL

Buffer: phosphate buffered saline (without Mg²⁺ and Ca²⁺), pH 7.4, 150 mM NaCl, 0.02 % sodium azide and 50 % glycerol.

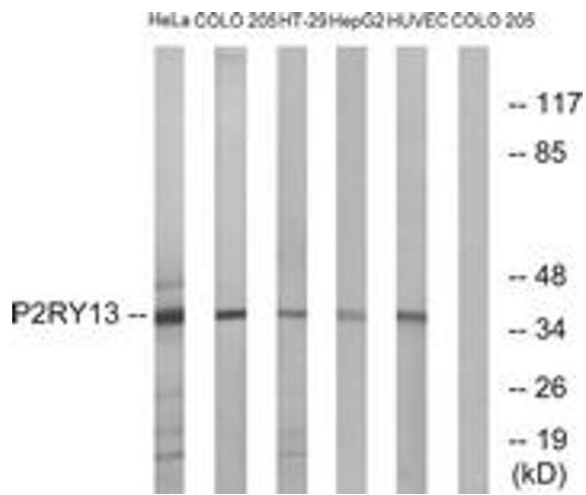
Preservative: Sodium azide

Precaution of Use: This product contains sodium azide: a POISONOUS AND HAZARDOUS SUBSTANCE which should be handled by trained staff only.

Storage: -20 °C

Storage Comment: Stable at -20°C for at least 1 year.

Expiry Date: 12 months



Western Blotting

Image 1. Western blot analysis of extracts from HeLa/COLO/HT-29/HepG2/HuvEc cells, using P2RY13 Antibody. The lane on the right is treated with the synthesized peptide.