



[Go to Product page](#)

Datasheet for ABIN1535988
anti-QRFPR antibody (AA 271-320)

2 Images

Overview

Quantity:	100 µg
Target:	QRFPR
Binding Specificity:	AA 271-320
Reactivity:	Human, Mouse, Rat
Host:	Rabbit
Clonality:	Polyclonal
Conjugate:	This QRFPR antibody is un-conjugated
Application:	Western Blotting (WB), ELISA, Immunofluorescence (IF)

Product Details

Immunogen:	The antiserum was produced against synthesized peptide derived from human GPR103.
Isotype:	IgG
Specificity:	GPR103 Antibody detects endogenous levels of total GPR103 protein.
Purification:	The antibody was purified from rabbit antiserum by affinity-chromatography using immunogen.
Purity:	> 95 %

Target Details

Target:	QRFPR
Alternative Name:	GPR103 (QRFPR Products)
Background:	Synonyms: G-protein coupled receptor 103, SP9155, AQ27

Target Details

NCBI Gene Symbol: QRFPR

Molecular Weight: 49 kDa

Gene ID: 84109

OMIM: 606925

UniProt: [Q96P65](#)

Application Details

Application Notes: WB: 1:500~1:1000 IF: 1:100~1:500 ELISA: 1:10000

Comment: Unigene-Number: Hs.368977 (NCBI Gene Symbol: QRFPR)

Restrictions: For Research Use only

Handling

Format: Liquid

Concentration: 1 mg/mL

Buffer: phosphate buffered saline (without Mg²⁺ and Ca²⁺), pH 7.4, 150 mM NaCl, 0.02 % sodium azide and 50 % glycerol.

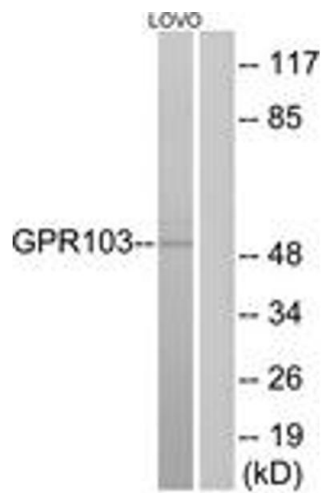
Preservative: Sodium azide

Precaution of Use: This product contains sodium azide: a POISONOUS AND HAZARDOUS SUBSTANCE which should be handled by trained staff only.

Storage: -20 °C

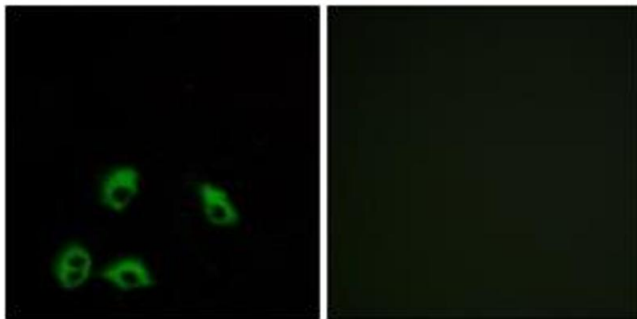
Storage Comment: Stable at -20°C for at least 1 year.

Expiry Date: 12 months



Western Blotting

Image 1. Western blot analysis of extracts from LOVO cells, using GPR103 Antibody. The lane on the right is treated with the synthesized peptide.



Immunofluorescence

Image 2. Immunofluorescence analysis of MCF7 cells, using GPR103 Antibody. The picture on the right is treated with the synthesized peptide.