

Datasheet for ABIN1535989

anti-GPRC5A antibody (AA 140-189)[Go to Product page](#)**1** Image

Overview

Quantity:	100 µL
Target:	GPRC5A
Binding Specificity:	AA 140-189
Reactivity:	Human, Mouse, Rat
Host:	Rabbit
Clonality:	Polyclonal
Conjugate:	This GPRC5A antibody is un-conjugated
Application:	Western Blotting (WB), ELISA

Product Details

Immunogen:	The antiserum was produced against synthesized peptide derived from human GPRC5A.
Isotype:	IgG
Specificity:	GPRC5A Antibody detects endogenous levels of total GPRC5A protein.
Purification:	The antibody was purified from rabbit antiserum by affinity-chromatography using immunogen.
Purity:	> 95 %

Target Details

Target:	GPRC5A
Alternative Name:	GPRC5A (GPRC5A Products)
Background:	Synonyms: G-protein coupled receptor family C group 5 member A, Retinoic acid-induced gene

Target Details

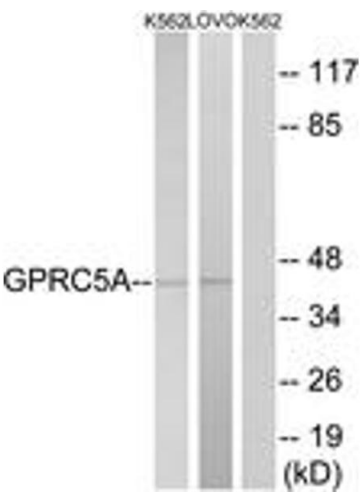
	1 protein, RAIG-1, Orphan G-protein-coupling receptor PEIG-1, NCBI Gene Symbol: GPRC5A
Molecular Weight:	40 kDa
Gene ID:	9052
OMIM:	604138
UniProt:	Q8NFJ5

Application Details

Application Notes:	WB: 1:500~1:1000 ELISA: 1:10000
Comment:	Unigene-Number: Hs.631733 (NCBI Gene Symbol: GPRC5A)
Restrictions:	For Research Use only

Handling

Format:	Liquid
Concentration:	1 mg/mL
Buffer:	phosphate buffered saline (without Mg2+ and Ca2+), pH 7.4, 150 mM NaCl, 0.02 % sodium azide and 50 % glycerol.
Preservative:	Sodium azide
Precaution of Use:	This product contains sodium azide: a POISONOUS AND HAZARDOUS SUBSTANCE which should be handled by trained staff only.
Storage:	-20 °C
Storage Comment:	Stable at -20°C for at least 1 year.
Expiry Date:	12 months



Western Blotting

Image 1. Western blot analysis of extracts from K562/LOVO cells, using GPRC5A Antibody. The lane on the right is treated with the synthesized peptide.