



[Go to Product page](#)

Datasheet for ABIN1535990

## anti-RGR antibody (AA 169-218)

### 2 Images

#### Overview

|                      |  |
|----------------------|--|
| Quantity:            | 100 µg   |
| Target:              | RGR  |
| Binding Specificity: | AA 169-218   |
| Reactivity:          | Human  |
| Host:                | Rabbit   |
| Clonality:           | Polyclonal   |
| Conjugate:           | This RGR antibody is un-conjugated                         |
| Application:         | Immunohistochemistry (IHC), ELISA, Immunofluorescence (IF) |

#### Product Details

|               |   |
|---------------|---|
| Immunogen:    | The antiserum was produced against synthesized peptide derived from human RGR.              |
| Isotype:      | IgG   |
| Specificity:  | RGR Antibody detects endogenous levels of total RGR protein.                                |
| Purification: | The antibody was purified from rabbit antiserum by affinity-chromatography using immunogen. |
| Purity:       | > 95 %  |

#### Target Details

|                   |   |
|-------------------|---|
| Target:           | RGR   |
| Alternative Name: | RGR ( <a href="#">RGR Products</a> )                  |
| Background:       | Synonyms: RPE-retinal G protein-coupled receptor, RGR |

## Target Details

---

NCBI Gene Symbol: RGR

Molecular Weight: 31 kDa

Gene ID: 5995

OMIM: 600342

UniProt: [P47804](#)

## Application Details

---

Application Notes: IHC: 1:50~1:100 IF: 1:100~1:500 ELISA: 1:1000

Comment: Unigene-Number: Hs.1544 (NCBI Gene Symbol: RGR)

Restrictions: For Research Use only

## Handling

---

Format: Liquid

Concentration: 1 mg/mL

Buffer: phosphate buffered saline (without Mg<sup>2+</sup> and Ca<sup>2+</sup>), pH 7.4, 150 mM NaCl, 0.02 % sodium azide and 50 % glycerol.

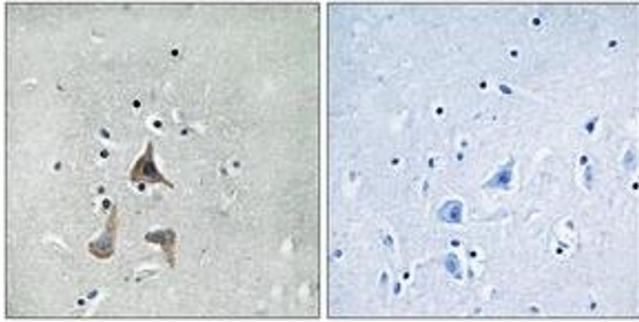
Preservative: Sodium azide

Precaution of Use: This product contains sodium azide: a POISONOUS AND HAZARDOUS SUBSTANCE which should be handled by trained staff only.

Storage: -20 °C

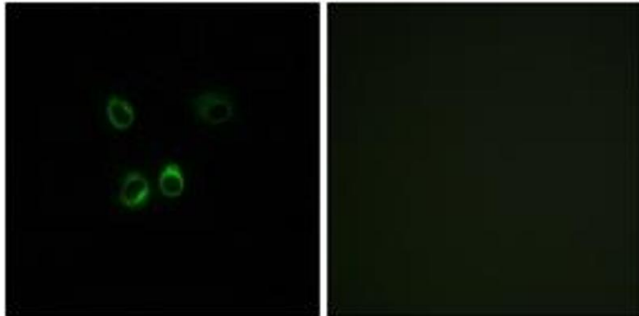
Storage Comment: Stable at -20°C for at least 1 year.

Expiry Date: 12 months



### Immunohistochemistry

**Image 1.** Immunohistochemistry analysis of paraffin-embedded human brain tissue, using RGR Antibody. The picture on the right is treated with the synthesized peptide.



### Immunofluorescence

**Image 2.** Immunofluorescence analysis of MCF7 cells, using RGR Antibody. The picture on the right is treated with the synthesized peptide.