



[Go to Product page](#)

Datasheet for ABIN1535996
anti-SSTR1 antibody (AA 9-58)

2 Images

Overview

Quantity:	100 µL
Target:	SSTR1
Binding Specificity:	AA 9-58
Reactivity:	Human, Mouse, Rat
Host:	Rabbit
Clonality:	Polyclonal
Conjugate:	This SSTR1 antibody is un-conjugated
Application:	Western Blotting (WB), ELISA, Immunofluorescence (IF)

Product Details

Immunogen:	The antiserum was produced against synthesized peptide derived from human SSTR1.
Isotype:	IgG
Specificity:	SSTR1 Antibody detects endogenous levels of total SSTR1 protein.
Purification:	The antibody was purified from rabbit antiserum by affinity-chromatography using immunogen.
Purity:	> 95 %

Target Details

Target:	SSTR1
Alternative Name:	SSTR1 (SSTR1 Products)
Background:	Synonyms: Somatostatin receptor type 1, SS1R, SRIF-2, SSTR1

Target Details

NCBI Gene Symbol: SSTR1

Molecular Weight: 42 kDa

Gene ID: 6751

OMIM: 182451

UniProt: [P30872](#)

Application Details

Application Notes: WB: 1:500~1:1000 IF: 1:100~1:500 ELISA: 1:20000

Comment: Unigene-Number: Hs.248160 (NCBI Gene Symbol: SSTR1)

Restrictions: For Research Use only

Handling

Format: Liquid

Concentration: 1 mg/mL

Buffer: phosphate buffered saline (without Mg²⁺ and Ca²⁺), pH 7.4, 150 mM NaCl, 0.02 % sodium azide and 50 % glycerol.

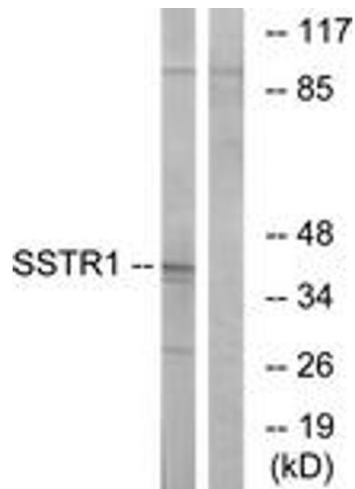
Preservative: Sodium azide

Precaution of Use: This product contains sodium azide: a POISONOUS AND HAZARDOUS SUBSTANCE which should be handled by trained staff only.

Storage: -20 °C

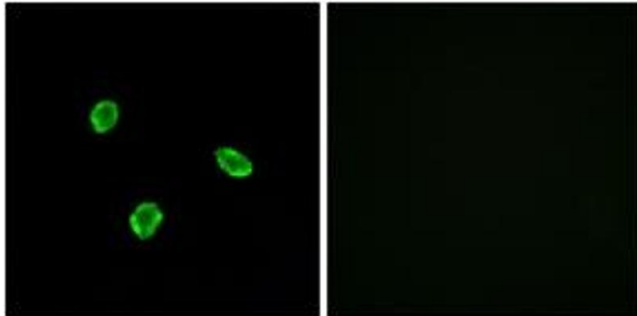
Storage Comment: Stable at -20°C for at least 1 year.

Expiry Date: 12 months



Western Blotting

Image 1. Western blot analysis of extracts from COS7 cells, using SSTR1 Antibody. The lane on the right is treated with the synthesized peptide.



Immunofluorescence

Image 2. Immunofluorescence analysis of A549 cells, using SSTR1 Antibody. The picture on the right is treated with the synthesized peptide.