

Datasheet for ABIN1535999
anti-TMEM185A antibody (AA 290-339)[Go to Product page](#)

2 Images

Overview

Quantity:	100 µg
Target:	TMEM185A
Binding Specificity:	AA 290-339
Reactivity:	Human, Mouse
Host:	Rabbit
Clonality:	Polyclonal
Conjugate:	This TMEM185A antibody is un-conjugated
Application:	Western Blotting (WB), ELISA, Immunofluorescence (IF)

Product Details

Immunogen:	The antiserum was produced against synthesized peptide derived from human TMEM185A.
Isotype:	IgG
Specificity:	TMEM185A Antibody detects endogenous levels of total TMEM185A protein.
Purification:	The antibody was purified from rabbit antiserum by affinity-chromatography using immunogen.
Purity:	> 95 %

Target Details

Target:	TMEM185A
Alternative Name:	TMEM185A (TMEM185A Products)
Background:	Synonyms: Transmembrane protein 185A, Protein FAM11A, CXorf13, FAM11A

Target Details

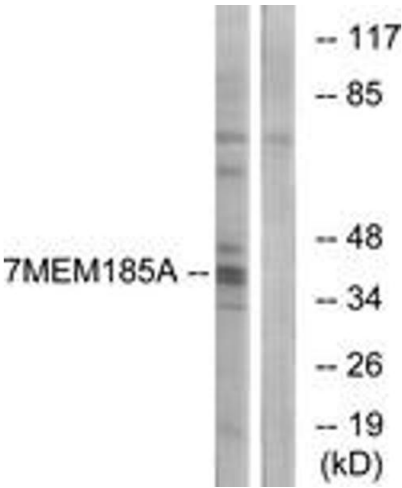
	NCBI Gene Symbol: TMEM185A
Molecular Weight:	40 kDa
Gene ID:	84548
OMIM:	300031
UniProt:	Q8NFB2

Application Details

Application Notes:	WB: 1:500~1:1000 IF: 1:100~1:500 ELISA: 1:20000
Comment:	Unigene-Number: Hs.522172 (NCBI Gene Symbol: TMEM185A)
Restrictions:	For Research Use only

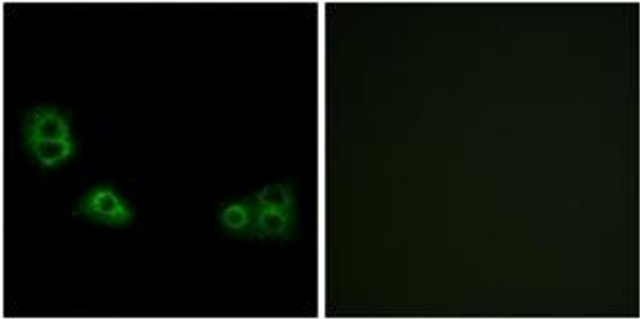
Handling

Format:	Liquid
Concentration:	1 mg/mL
Buffer:	phosphate buffered saline (without Mg ²⁺ and Ca ²⁺), pH 7.4, 150 mM NaCl, 0.02 % sodium azide and 50 % glycerol.
Preservative:	Sodium azide
Precaution of Use:	This product contains sodium azide: a POISONOUS AND HAZARDOUS SUBSTANCE which should be handled by trained staff only.
Storage:	-20 °C
Storage Comment:	Stable at -20°C for at least 1 year.
Expiry Date:	12 months



Western Blotting

Image 1. Western blot analysis of extracts from K562 cells, using TMEM185A Antibody. The lane on the right is treated with the synthesized peptide.



Immunofluorescence

Image 2. Immunofluorescence analysis of MCF7 cells, using TMEM185A Antibody. The picture on the right is treated with the synthesized peptide.