

Datasheet for ABIN1536000
anti-TAS2R10 antibody (AA 122-171)[Go to Product page](#)

2 Images

Overview

Quantity:	100 µg
Target:	TAS2R10
Binding Specificity:	AA 122-171
Reactivity:	Human
Host:	Rabbit
Clonality:	Polyclonal
Conjugate:	This TAS2R10 antibody is un-conjugated
Application:	Western Blotting (WB), ELISA, Immunofluorescence (IF)

Product Details

Immunogen:	The antiserum was produced against synthesized peptide derived from human TAS2R10.
Isotype:	IgG
Specificity:	TAS2R10 Antibody detects endogenous levels of total TAS2R10 protein.
Purification:	The antibody was purified from rabbit antiserum by affinity-chromatography using immunogen.
Purity:	> 95 %

Target Details

Target:	TAS2R10
Alternative Name:	TAS2R10 (TAS2R10 Products)
Background:	Synonyms: T2R10, Taste receptor family B member 2, TRB2,

Target Details

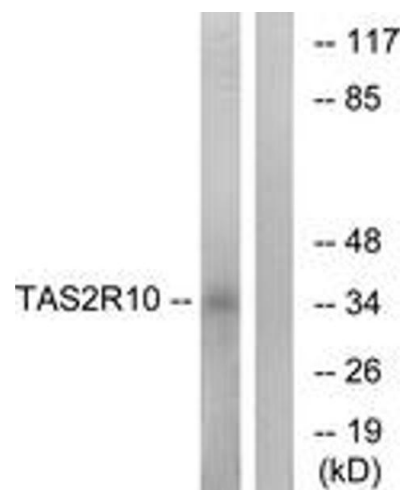
	NCBI Gene Symbol: TAS2R10
Molecular Weight:	35 kDa
Gene ID:	50839
OMIM:	604791
UniProt:	Q9NYW0

Application Details

Application Notes:	WB: 1:500~1:1000 IF: 1:100~1:500 ELISA: 1:10000
Comment:	Unigene-Number: Hs.533756 (NCBI Gene Symbol: TAS2R10)
Restrictions:	For Research Use only

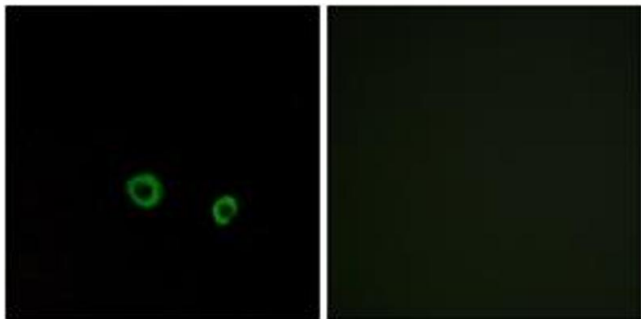
Handling

Format:	Liquid
Concentration:	1 mg/mL
Buffer:	phosphate buffered saline (without Mg ²⁺ and Ca ²⁺), pH 7.4, 150 mM NaCl, 0.02 % sodium azide and 50 % glycerol.
Preservative:	Sodium azide
Precaution of Use:	This product contains sodium azide: a POISONOUS AND HAZARDOUS SUBSTANCE which should be handled by trained staff only.
Storage:	-20 °C
Storage Comment:	Stable at -20°C for at least 1 year.
Expiry Date:	12 months



Western Blotting

Image 1. Western blot analysis of extracts from LOVO cells, using TAS2R10 Antibody. The lane on the right is treated with the synthesized peptide.



Immunofluorescence

Image 2. Immunofluorescence analysis of MCF7 cells, using TAS2R10 Antibody. The picture on the right is treated with the synthesized peptide.