

Datasheet for ABIN1536001
anti-TAS2R13 antibody (AA 123-172)[Go to Product page](#)

2 Images

Overview

Quantity:	100 µg
Target:	TAS2R13
Binding Specificity:	AA 123-172
Reactivity:	Human
Host:	Rabbit
Clonality:	Polyclonal
Conjugate:	This TAS2R13 antibody is un-conjugated
Application:	ELISA, Western Blotting (WB), Immunofluorescence (IF)

Product Details

Immunogen:	The antiserum was produced against synthesized peptide derived from human TAS2R13.
Isotype:	IgG
Specificity:	TAS2R13 Antibody detects endogenous levels of total TAS2R13 protein.
Purification:	The antibody was purified from rabbit antiserum by affinity-chromatography using immunogen.
Purity:	> 95 %

Target Details

Target:	TAS2R13
Alternative Name:	TAS2R13 (TAS2R13 Products)
Background:	Synonyms: T2R13, Taste receptor family B member 3, TRB3,

Target Details

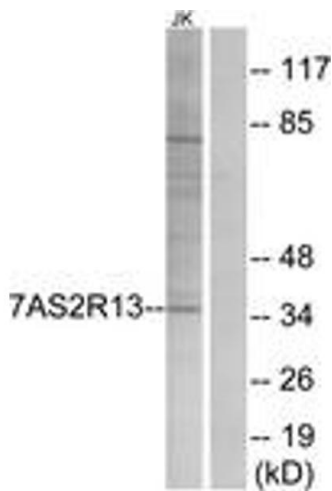
	NCBI Gene Symbol: TAS2R13
Molecular Weight:	35 kDa
Gene ID:	50838
OMIM:	604792
UniProt:	Q9NYV9

Application Details

Application Notes:	WB: 1:500~1:1000 IF: 1:100~1:500 ELISA: 1:10000
Comment:	Unigene-Number: Hs.679407 (NCBI Gene Symbol: TAS2R13)
Restrictions:	For Research Use only

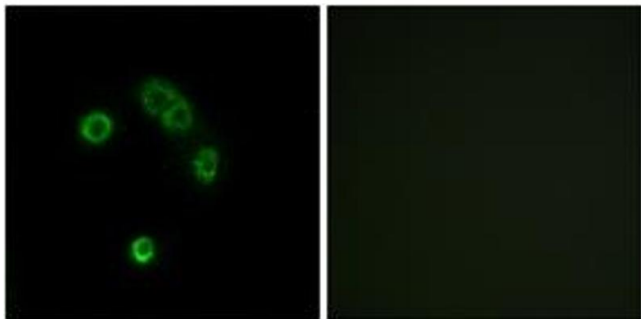
Handling

Format:	Liquid
Concentration:	1 mg/mL
Buffer:	phosphate buffered saline (without Mg ²⁺ and Ca ²⁺), pH 7.4, 150 mM NaCl, 0.02 % sodium azide and 50 % glycerol.
Preservative:	Sodium azide
Precaution of Use:	This product contains sodium azide: a POISONOUS AND HAZARDOUS SUBSTANCE which should be handled by trained staff only.
Storage:	-20 °C
Storage Comment:	Stable at -20°C for at least 1 year.
Expiry Date:	12 months



Western Blotting

Image 1. Western blot analysis of extracts from Jurkat cells, using TAS2R13 Antibody. The lane on the right is treated with the synthesized peptide.



Immunofluorescence

Image 2. Immunofluorescence analysis of MCF7 cells, using TAS2R13 Antibody. The picture on the right is treated with the synthesized peptide.