



[Go to Product page](#)

Datasheet for ABIN1536002

## anti-TAS2R14 antibody (AA 229-278)

### 2 Images

#### Overview

Quantity:	100 µL
Target:	TAS2R14
Binding Specificity:	AA 229-278
Reactivity:	Human
Host:	Rabbit
Clonality:	Polyclonal
Conjugate:	This TAS2R14 antibody is un-conjugated
Application:	ELISA, Western Blotting (WB), Immunofluorescence (IF)

#### Product Details

Immunogen:	The antiserum was produced against synthesized peptide derived from human TAS2R14.
Isotype:	IgG
Specificity:	TAS2R14 Antibody detects endogenous levels of total TAS2R14 protein.
Purification:	The antibody was purified from rabbit antiserum by affinity-chromatography using immunogen.
Purity:	> 95 %

#### Target Details

Target:	TAS2R14
Alternative Name:	TAS2R14 ( <a href="#">TAS2R14 Products</a> )
Background:	Synonyms: T2R14, Taste receptor family B member 1, TRB1,

## Target Details

---

NCBI Gene Symbol: TAS2R14

Molecular Weight: 36 kDa

Gene ID: 50840

OMIM: 604790

UniProt: [Q9NYV8](#)

## Application Details

---

Application Notes: WB: 1:500~1:1000 IF: 1:100~1:500 ELISA: 1:10000

Comment: Unigene-Number: Hs.408153, Hs.679406 (NCBI Gene Symbol: TAS2R14)

Restrictions: For Research Use only

## Handling

---

Format: Liquid

Concentration: 1 mg/mL

Buffer: phosphate buffered saline (without Mg<sup>2+</sup> and Ca<sup>2+</sup>), pH 7.4, 150 mM NaCl, 0.02 % sodium azide and 50 % glycerol.

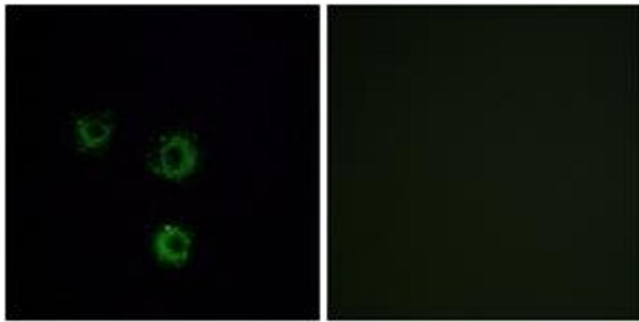
Preservative: Sodium azide

Precaution of Use: This product contains sodium azide: a POISONOUS AND HAZARDOUS SUBSTANCE which should be handled by trained staff only.

Storage: -20 °C

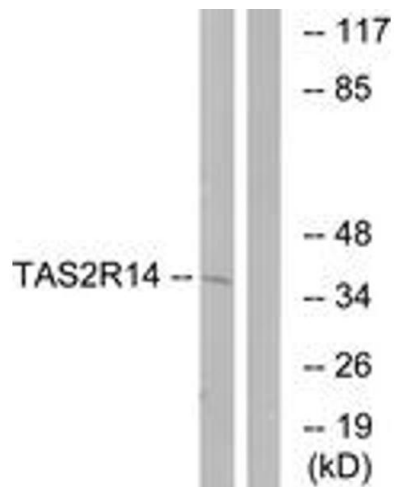
Storage Comment: Stable at -20°C for at least 1 year.

Expiry Date: 12 months



### Immunofluorescence

**Image 1.** Immunofluorescence analysis of MCF7 cells, using TAS2R14 Antibody. The picture on the right is treated with the synthesized peptide.



### Western Blotting

**Image 2.** Western blot analysis of extracts from MCF-7 cells, using TAS2R14 Antibody. The lane on the right is treated with the synthesized peptide.