

Datasheet for ABIN1536004
anti-TAS2R39 antibody (AA 218-267)



[Go to Product page](#)

2 Images

Overview

Quantity:	100 µL
Target:	TAS2R39
Binding Specificity:	AA 218-267
Reactivity:	Human
Host:	Rabbit
Clonality:	Polyclonal
Conjugate:	This TAS2R39 antibody is un-conjugated
Application:	Western Blotting (WB), ELISA, Immunofluorescence (IF)

Product Details

Immunogen:	The antiserum was produced against synthesized peptide derived from human TAS2R39.
Isotype:	IgG
Specificity:	TAS2R39 Antibody detects endogenous levels of total TAS2R39 protein.
Purification:	The antibody was purified from rabbit antiserum by affinity-chromatography using immunogen.
Purity:	> 95 %

Target Details

Target:	TAS2R39
Alternative Name:	TAS2R39 (TAS2R39 Products)
Background:	Synonyms: T2R39, T2R57

Target Details

NCBI Gene Symbol: TAS2R39

Molecular Weight: 38 kDa

Gene ID: 259285

UniProt: [P59534](#)

Application Details

Application Notes: WB: 1:500~1:1000 IF: 1:100~1:500 ELISA: 1:20000

Comment: Unigene-Number: Hs.553660 (NCBI Gene Symbol: TAS2R39)

Restrictions: For Research Use only

Handling

Format: Liquid

Concentration: 1 mg/mL

Buffer: phosphate buffered saline (without Mg²⁺ and Ca²⁺), pH 7.4, 150 mM NaCl, 0.02 % sodium azide and 50 % glycerol.

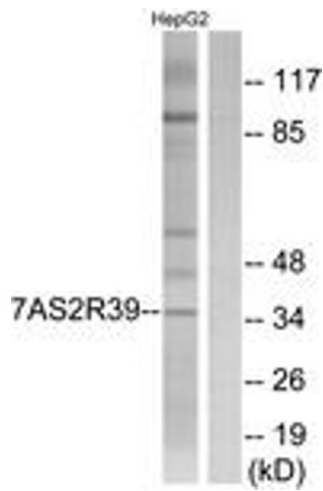
Preservative: Sodium azide

Precaution of Use: This product contains sodium azide: a POISONOUS AND HAZARDOUS SUBSTANCE which should be handled by trained staff only.

Storage: -20 °C

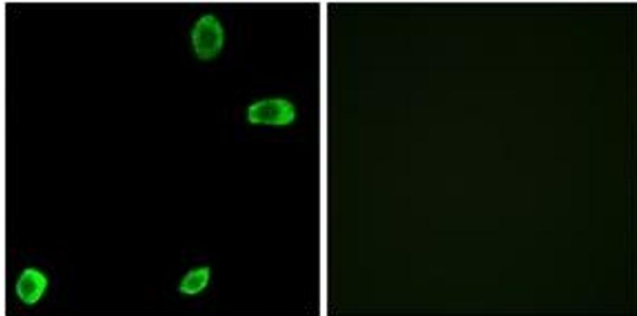
Storage Comment: Stable at -20°C for at least 1 year.

Expiry Date: 12 months



Western Blotting

Image 1. Western blot analysis of extracts from HepG2 cells, using TAS2R39 Antibody. The lane on the right is treated with the synthesized peptide.



Immunofluorescence

Image 2. Immunofluorescence analysis of A549 cells, using TAS2R39 Antibody. The picture on the right is treated with the synthesized peptide.