



Datasheet for ABIN1536008
anti-TAS2R7 antibody (AA 47-96)



[Go to Product page](#)

2 Images

Overview

Quantity:	100 µL
Target:	TAS2R7
Binding Specificity:	AA 47-96
Reactivity:	Human
Host:	Rabbit
Clonality:	Polyclonal
Conjugate:	This TAS2R7 antibody is un-conjugated
Application:	Western Blotting (WB), ELISA, Immunofluorescence (IF)

Product Details

Immunogen:	The antiserum was produced against synthesized peptide derived from human TAS2R7.
Isotype:	IgG
Specificity:	TAS2R7 Antibody detects endogenous levels of total TAS2R7 protein.
Purification:	The antibody was purified from rabbit antiserum by affinity-chromatography using immunogen.
Purity:	> 95 %

Target Details

Target:	TAS2R7
Alternative Name:	TAS2R7 (TAS2R7 Products)
Background:	Synonyms: T2R7, Taste receptor family B member 4, TRB4,

Target Details

NCBI Gene Symbol: TAS2R7

Molecular Weight: 36 kDa

Gene ID: 50837

OMIM: 604793

UniProt: [Q9NYW3](#)

Application Details

Application Notes: WB: 1:500~1:1000 IF: 1:100~1:500 ELISA: 1:20000

Comment: Unigene-Number: Hs.533754 (NCBI Gene Symbol: TAS2R7)

Restrictions: For Research Use only

Handling

Format: Liquid

Concentration: 1 mg/mL

Buffer: phosphate buffered saline (without Mg²⁺ and Ca²⁺), pH 7.4, 150 mM NaCl, 0.02 % sodium azide and 50 % glycerol.

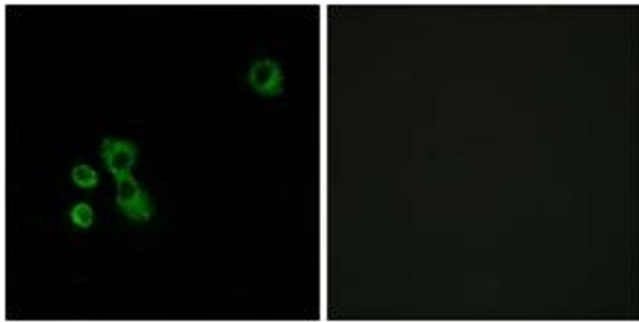
Preservative: Sodium azide

Precaution of Use: This product contains sodium azide: a POISONOUS AND HAZARDOUS SUBSTANCE which should be handled by trained staff only.

Storage: -20 °C

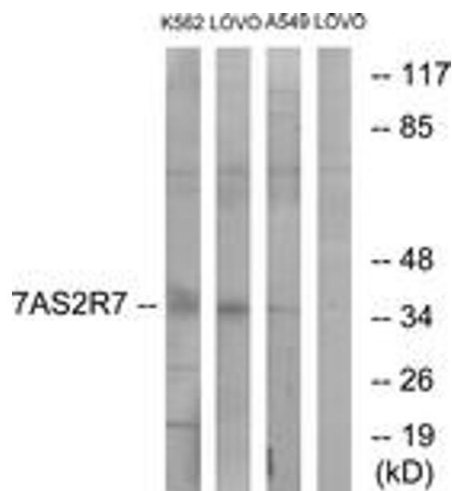
Storage Comment: Stable at -20°C for at least 1 year.

Expiry Date: 12 months



Immunofluorescence

Image 1. Immunofluorescence analysis of MCF7 cells, using TAS2R7 Antibody. The picture on the right is treated with the synthesized peptide.



Western Blotting

Image 2. Western blot analysis of extracts from K562/LOVO/A549 cells, using TAS2R7 Antibody. The lane on the right is treated with the synthesized peptide.