



[Go to Product page](#)

Datasheet for ABIN1536022
anti-GPR42 antibody (AA 12-61)

1 Image

Overview

Quantity:	100 µg
Target:	GPR42
Binding Specificity:	AA 12-61
Reactivity:	Human
Host:	Rabbit
Clonality:	Polyclonal
Conjugate:	This GPR42 antibody is un-conjugated
Application:	ELISA, Immunofluorescence (IF)

Product Details

Immunogen:	The antiserum was produced against synthesized peptide derived from human GPR42.
Isotype:	IgG
Specificity:	GPR42 Antibody detects endogenous levels of total GPR42 protein.
Purification:	The antibody was purified from rabbit antiserum by affinity-chromatography using immunogen.
Purity:	> 95 %

Target Details

Target:	GPR42
Alternative Name:	GPR42 (GPR42 Products)
Background:	Synonyms: Putative G-protein coupled receptor 42, GPR42P, GPR42

Target Details

NCBI Gene Symbol: GPR42

Molecular Weight: 38 kDa

Gene ID: 2866

OMIM: 603822

UniProt: [O15529](#)

Application Details

Application Notes: IF: 1:100~1:500 ELISA: 1:20000

Comment: (NCBI Gene Symbol: GPR42)

Restrictions: For Research Use only

Handling

Format: Liquid

Concentration: 1 mg/mL

Buffer: phosphate buffered saline (without Mg²⁺ and Ca²⁺), pH 7.4, 150 mM NaCl, 0.02 % sodium azide and 50 % glycerol.

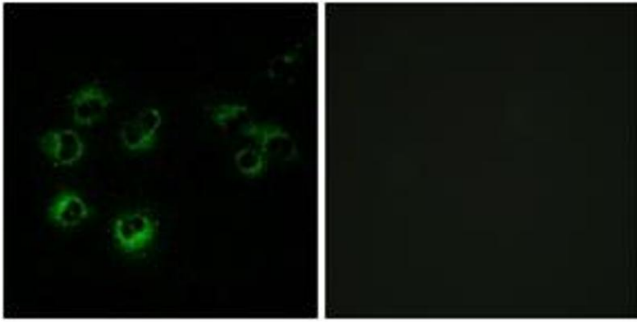
Preservative: Sodium azide

Precaution of Use: This product contains sodium azide: a POISONOUS AND HAZARDOUS SUBSTANCE which should be handled by trained staff only.

Storage: -20 °C

Storage Comment: Stable at -20°C for at least 1 year.

Expiry Date: 12 months



Immunofluorescence

Image 1. Immunofluorescence analysis of MCF-7 cells, using GPR42 Antibody. The picture on the right is treated with the synthesized peptide.