



[Go to Product page](#)

Datasheet for ABIN1536030  
**anti-OR10S1 antibody (AA 213-262)**

2 Images

Overview

|                      |   |
|----------------------|---|
| Quantity:            | 100 µg  |
| Target:              | OR10S1  |
| Binding Specificity: | AA 213-262  |
| Reactivity:          | Human   |
| Host:                | Rabbit  |
| Clonality:           | Polyclonal  |
| Conjugate:           | This OR10S1 antibody is un-conjugated                 |
| Application:         | Western Blotting (WB), ELISA, Immunofluorescence (IF) |

Product Details

|               |   |
|---------------|---|
| Immunogen:    | The antiserum was produced against synthesized peptide derived from human OR10S1.           |
| Isotype:      | IgG   |
| Specificity:  | OR10S1 Antibody detects endogenous levels of total OR10S1 protein.                          |
| Purification: | The antibody was purified from rabbit antiserum by affinity-chromatography using immunogen. |
| Purity:       | > 95 %  |

Target Details

|                   |  |
|-------------------|--|
| Target:           | OR10S1   |
| Alternative Name: | OR10S1 ( <a href="#">OR10S1 Products</a> )                             |
| Background:       | Synonyms: Olfactory receptor 10S1, Olfactory receptor OR11-279, OR10S1 |

## Target Details

---

NCBI Gene Symbol: OR10S1

Molecular Weight: 35 kDa

Gene ID: 219873

UniProt: [Q8NGN2](#), [Q6IEV3](#)

## Application Details

---

Application Notes: WB: 1:500~1:1000 IF: 1:100~1:500 ELISA: 1:20000

Comment: Unigene-Number: Hs.553637 (NCBI Gene Symbol: OR10S1)

Restrictions: For Research Use only

## Handling

---

Format: Liquid

Concentration: 1 mg/mL

Buffer: phosphate buffered saline (without Mg<sup>2+</sup> and Ca<sup>2+</sup>), pH 7.4, 150 mM NaCl, 0.02 % sodium azide and 50 % glycerol.

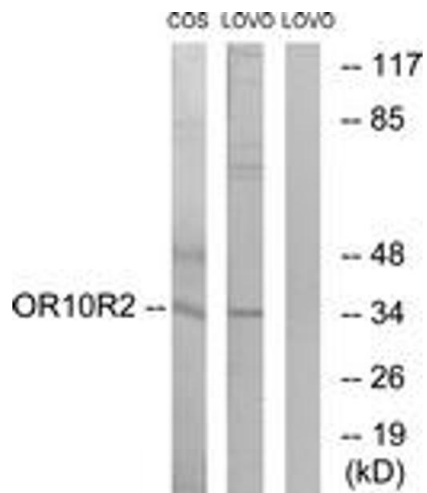
Preservative: Sodium azide

Precaution of Use: This product contains sodium azide: a POISONOUS AND HAZARDOUS SUBSTANCE which should be handled by trained staff only.

Storage: -20 °C

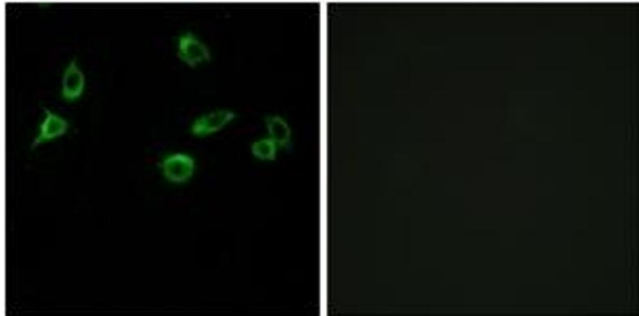
Storage Comment: Stable at -20°C for at least 1 year.

Expiry Date: 12 months



### Western Blotting

**Image 1.** Western blot analysis of extracts from COS7/LOVO cells, using OR10S1 Antibody. The lane on the right is treated with the synthesized peptide.



### Immunofluorescence

**Image 2.** Immunofluorescence analysis of MCF7 cells, using OR10S1 Antibody. The picture on the right is treated with the synthesized peptide.