



[Go to Product page](#)

Datasheet for ABIN1536031
anti-OR10Z1 antibody (AA 201-250)

2 Images

Overview

Quantity:	100 µg
Target:	OR10Z1
Binding Specificity:	AA 201-250
Reactivity:	Human
Host:	Rabbit
Clonality:	Polyclonal
Conjugate:	This OR10Z1 antibody is un-conjugated
Application:	Western Blotting (WB), ELISA, Immunofluorescence (IF)

Product Details

Immunogen:	The antiserum was produced against synthesized peptide derived from human OR10Z1.
Isotype:	IgG
Specificity:	OR10Z1 Antibody detects endogenous levels of total OR10Z1 protein.
Purification:	The antibody was purified from rabbit antiserum by affinity-chromatography using immunogen.
Purity:	> 95 %

Target Details

Target:	OR10Z1
Alternative Name:	OR10Z1 (OR10Z1 Products)
Background:	Synonyms: Olfactory receptor 10Z1, Olfactory receptor OR1-15, OR10Z1

Target Details

NCBI Gene Symbol: OR10Z1

Molecular Weight: 34 kDa

Gene ID: 128368

UniProt: [Q8NGY1](#)

Application Details

Application Notes: WB: 1:500~1:1000 IF: 1:100~1:500 ELISA: 1:20000

Comment: Unigene-Number: Hs.553590 (NCBI Gene Symbol: OR10Z1)

Restrictions: For Research Use only

Handling

Format: Liquid

Concentration: 1 mg/mL

Buffer: phosphate buffered saline (without Mg²⁺ and Ca²⁺), pH 7.4, 150 mM NaCl, 0.02 % sodium azide and 50 % glycerol.

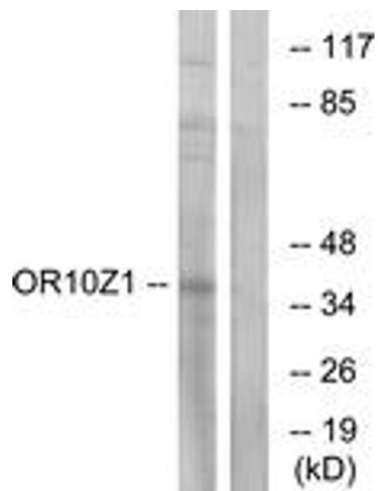
Preservative: Sodium azide

Precaution of Use: This product contains sodium azide: a POISONOUS AND HAZARDOUS SUBSTANCE which should be handled by trained staff only.

Storage: -20 °C

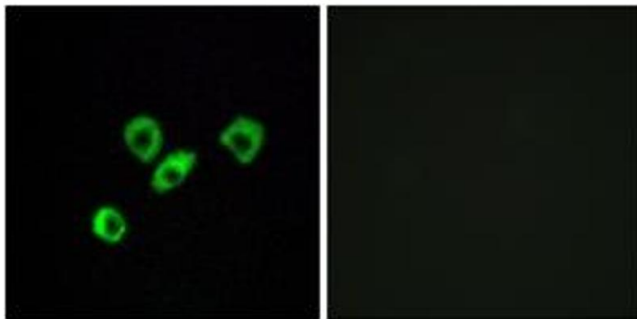
Storage Comment: Stable at -20°C for at least 1 year.

Expiry Date: 12 months



Western Blotting

Image 1. Western blot analysis of extracts from COS7 cells, using OR10Z1 Antibody. The lane on the right is treated with the synthesized peptide.



Immunofluorescence

Image 2. Immunofluorescence analysis of MCF7 cells, using OR10Z1 Antibody. The picture on the right is treated with the synthesized peptide.