



[Go to Product page](#)

Datasheet for ABIN1536036

## anti-OR2T5/2T29 antibody (AA 66-115)

### 2 Images

#### Overview

Quantity:	100 µg
Target:	OR2T5/2T29
Binding Specificity:	AA 66-115
Reactivity:	Human
Host:	Rabbit
Clonality:	Polyclonal
Conjugate:	This OR2T5/2T29 antibody is un-conjugated
Application:	ELISA, Western Blotting (WB), Immunofluorescence (IF)

#### Product Details

Immunogen:	The antiserum was produced against synthesized peptide derived from human OR2T5/2T29.
Isotype:	IgG
Specificity:	OR2T5/2T29 Antibody detects endogenous levels of total OR2T5/2T29 protein.
Purification:	The antibody was purified from rabbit antiserum by affinity-chromatography using immunogen.
Purity:	> 95 %

#### Target Details

Target:	OR2T5/2T29
Abstract:	<a href="#">OR2T5/2T29 Products</a>
Background:	Synonyms: Olfactory receptor 2T29, Olfactory receptor 2T5, Olfactory receptor OR1-62

## Target Details

---

NCBI Gene Symbol: OR2T5

Molecular Weight: 35 kDa

Gene ID: 401993

UniProt: [Q8NH02](#), [Q6IEZ7](#)

## Application Details

---

Application Notes: WB: 1:500~1:1000 IF: 1:100~1:500 ELISA: 1:20000

Comment: Unigene-Number: Hs.553707Hs.553808 (NCBI Gene Symbol: OR2T5)

Restrictions: For Research Use only

## Handling

---

Format: Liquid

Concentration: 1 mg/mL

Buffer: phosphate buffered saline (without Mg<sup>2+</sup> and Ca<sup>2+</sup>), pH 7.4, 150 mM NaCl, 0.02 % sodium azide and 50 % glycerol.

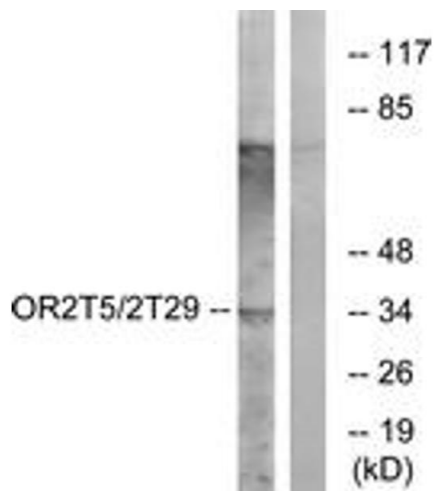
Preservative: Sodium azide

Precaution of Use: This product contains sodium azide: a POISONOUS AND HAZARDOUS SUBSTANCE which should be handled by trained staff only.

Storage: -20 °C

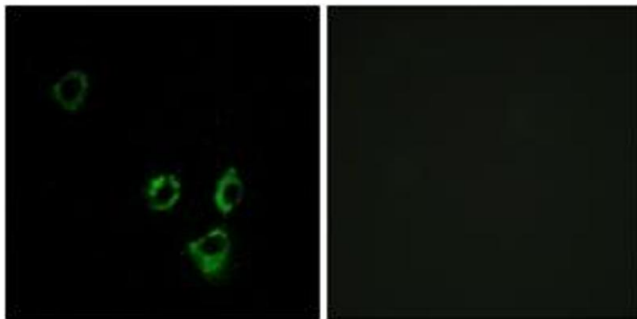
Storage Comment: Stable at -20°C for at least 1 year.

Expiry Date: 12 months



### Western Blotting

**Image 1.** Western blot analysis of extracts from K562 cells, using OR2T5/2T29 Antibody. The lane on the right is treated with the synthesized peptide.



### Immunofluorescence

**Image 2.** Immunofluorescence analysis of MCF7 cells, using OR2T5/2T29 Antibody. The picture on the right is treated with the synthesized peptide.