

Datasheet for ABIN1536038
anti-OR51B6 antibody (AA 66-115)[Go to Product page](#)

2 Images

Overview

Quantity:	100 µg
Target:	OR51B6
Binding Specificity:	AA 66-115
Reactivity:	Human
Host:	Rabbit
Clonality:	Polyclonal
Conjugate:	This OR51B6 antibody is un-conjugated
Application:	Western Blotting (WB), ELISA, Immunofluorescence (IF)

Product Details

Immunogen:	The antiserum was produced against synthesized peptide derived from human OR51B6.
Isotype:	IgG
Specificity:	OR51B6 Antibody detects endogenous levels of total OR51B6 protein.
Purification:	The antibody was purified from rabbit antiserum by affinity-chromatography using immunogen.
Purity:	> 95 %

Target Details

Target:	OR51B6
Alternative Name:	OR51B6 (OR51B6 Products)
Background:	Synonyms: Olfactory receptor 51B5, Odorant receptor HOR5 ^{beta} 6

Target Details

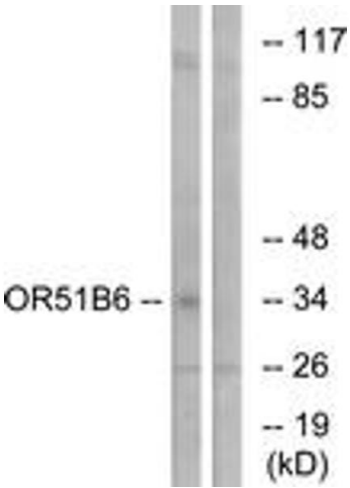
	NCBI Gene Symbol: OR51B6
Molecular Weight:	35 kDa
Gene ID:	390058
UniProt:	Q9H340

Application Details

Application Notes:	WB: 1:500~1:1000 IF: 1:100~1:500 ELISA: 1:20000
Comment:	Unigene-Number: Hs.553730 (NCBI Gene Symbol: OR51B6)
Restrictions:	For Research Use only

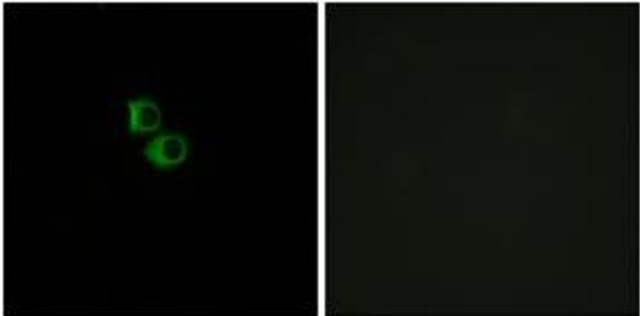
Handling

Format:	Liquid
Concentration:	1 mg/mL
Buffer:	phosphate buffered saline (without Mg2+ and Ca2+), pH 7.4, 150 mM NaCl, 0.02 % sodium azide and 50 % glycerol.
Preservative:	Sodium azide
Precaution of Use:	This product contains sodium azide: a POISONOUS AND HAZARDOUS SUBSTANCE which should be handled by trained staff only.
Storage:	-20 °C
Storage Comment:	Stable at -20°C for at least 1 year.
Expiry Date:	12 months



Western Blotting

Image 1. Western blot analysis of extracts from K562 cells, using OR51B6 Antibody. The lane on the right is treated with the synthesized peptide.



Immunofluorescence

Image 2. Immunofluorescence analysis of MCF7 cells, using OR51B6 Antibody. The picture on the right is treated with the synthesized peptide.