

Datasheet for ABIN1536040
anti-OR51F2 antibody (AA 292-341)

2 Images

[Go to Product page](#)

Overview

Quantity:	100 µg
Target:	OR51F2
Binding Specificity:	AA 292-341
Reactivity:	Human
Host:	Rabbit
Clonality:	Polyclonal
Conjugate:	This OR51F2 antibody is un-conjugated
Application:	ELISA, Western Blotting (WB), Immunofluorescence (IF)

Product Details

Immunogen:	The antiserum was produced against synthesized peptide derived from human OR51F2.
Isotype:	IgG
Specificity:	OR51F2 Antibody detects endogenous levels of total OR51F2 protein.
Purification:	The antibody was purified from rabbit antiserum by affinity-chromatography using immunogen.
Purity:	> 95 %

Target Details

Target:	OR51F2
Alternative Name:	OR51F2 (OR51F2 Products)
Background:	Synonyms: Olfactory receptor 51F2, Olfactory receptor OR11-23

Target Details

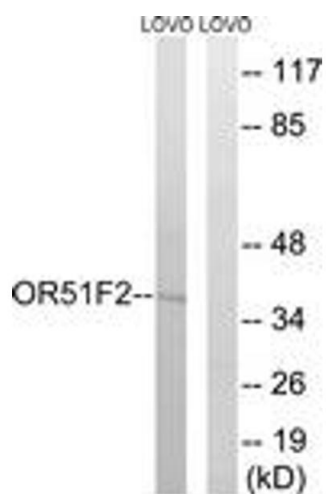
	NCBI Gene Symbol: OR51F2
Molecular Weight:	37 kDa
Gene ID:	119694
UniProt:	Q8NH61

Application Details

Application Notes:	WB: 1:500~1:1000 IF: 1:100~1:500 ELISA: 1:5000
Comment:	Unigene-Number: Hs.553562 (NCBI Gene Symbol: OR51F2)
Restrictions:	For Research Use only

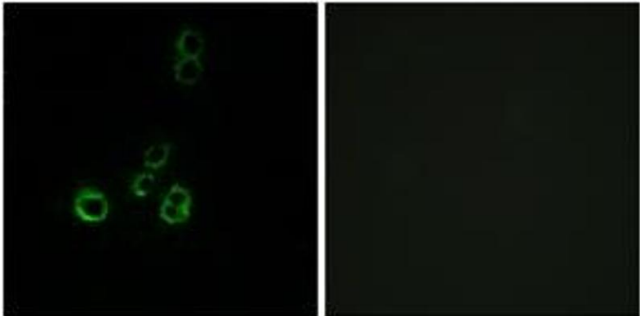
Handling

Format:	Liquid
Concentration:	1 mg/mL
Buffer:	phosphate buffered saline (without Mg ²⁺ and Ca ²⁺), pH 7.4, 150 mM NaCl, 0.02 % sodium azide and 50 % glycerol.
Preservative:	Sodium azide
Precaution of Use:	This product contains sodium azide: a POISONOUS AND HAZARDOUS SUBSTANCE which should be handled by trained staff only.
Storage:	-20 °C
Storage Comment:	Stable at -20°C for at least 1 year.
Expiry Date:	12 months



Western Blotting

Image 1. Western blot analysis of extracts from LOVO cells, using OR51F2 Antibody. The lane on the right is treated with the synthesized peptide.



Immunofluorescence

Image 2. Immunofluorescence analysis of MCF7 cells, using OR51F2 Antibody. The picture on the right is treated with the synthesized peptide.