



Datasheet for ABIN1536046  
**anti-OR52E5 antibody (AA 199-248)**



[Go to Product page](#)

1 Image

### Overview

Quantity:	100 µg
Target:	OR52E5
Binding Specificity:	AA 199-248
Reactivity:	Human
Host:	Rabbit
Clonality:	Polyclonal
Application:	ELISA, Western Blotting (WB)

### Product Details

Immunogen:	The antiserum was produced against synthesized peptide derived from human OR52E5.
Isotype:	IgG
Specificity:	OR52E5 Antibody detects endogenous levels of total OR52E5 protein.
Purification:	The antibody was purified from rabbit antiserum by affinity-chromatography using immunogen.
Purity:	> 95 %

### Target Details

Target:	OR52E5
Alternative Name:	OR52E5 ( <a href="#">OR52E5 Products</a> )
Background:	Synonyms: Olfactory receptor 52E5, OR52E5, NCBI Gene Symbol: OR52E5

## Target Details

---

Molecular Weight: 35 kDa

Gene ID: 390082

UniProt: [Q8NH55](#)

## Application Details

---

Application Notes: WB: 1:500~1:1000 ELISA: 1:20000

Comment: Unigene-Number: Hs.553739 (NCBI Gene Symbol: OR52E5)

Restrictions: For Research Use only

## Handling

---

Format: Liquid

Concentration: 1 mg/mL

Buffer: phosphate buffered saline (without Mg<sup>2+</sup> and Ca<sup>2+</sup>), pH 7.4, 150 mM NaCl, 0.02 % sodium azide and 50 % glycerol.

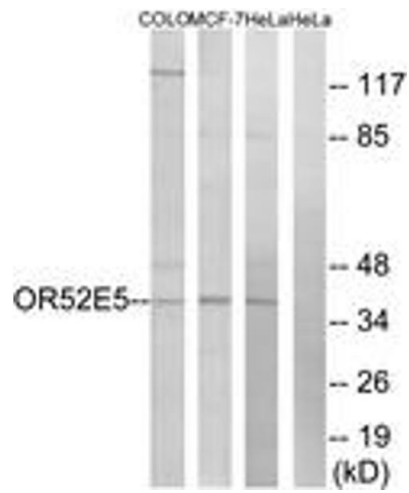
Preservative: Sodium azide

Precaution of Use: This product contains sodium azide: a POISONOUS AND HAZARDOUS SUBSTANCE which should be handled by trained staff only.

Storage: -20 °C

Storage Comment: Stable at -20°C for at least 1 year.

Expiry Date: 12 months



### Western Blotting

**Image 1.** Western blot analysis of extracts from COLO/MCF-7/HeLa cells, using OR52E5 Antibody. The lane on the right is treated with the synthesized peptide.