



[Go to Product page](#)

Datasheet for ABIN1536049

anti-OR56A3 antibody (AA 266-315)

1 Image

Overview

Quantity:	100 µg
Target:	OR56A3
Binding Specificity:	AA 266-315
Reactivity:	Human
Host:	Rabbit
Clonality:	Polyclonal
Conjugate:	This OR56A3 antibody is un-conjugated
Application:	ELISA, Immunofluorescence (IF)

Product Details

Immunogen:	The antiserum was produced against synthesized peptide derived from human OR56A3.
Isotype:	IgG
Specificity:	OR56A3 Antibody detects endogenous levels of total OR56A3 protein.
Purification:	The antibody was purified from rabbit antiserum by affinity-chromatography using immunogen.
Purity:	> 95 %

Target Details

Target:	OR56A3
Alternative Name:	OR56A3 (OR56A3 Products)
Background:	Synonyms: Olfactory receptor 56A3, OR56A3, OR56A3P, OR56A6,

Target Details

NCBI Gene Symbol: OR56A3

Molecular Weight: 35 kDa

Gene ID: 390083

UniProt: [Q8NH54](#)

Application Details

Application Notes: IF: 1:100~1:500 ELISA: 1:20000

Comment: Unigene-Number: Hs.553741 (NCBI Gene Symbol: OR56A3)

Restrictions: For Research Use only

Handling

Format: Liquid

Concentration: 1 mg/mL

Buffer: phosphate buffered saline (without Mg²⁺ and Ca²⁺), pH 7.4, 150 mM NaCl, 0.02 % sodium azide and 50 % glycerol.

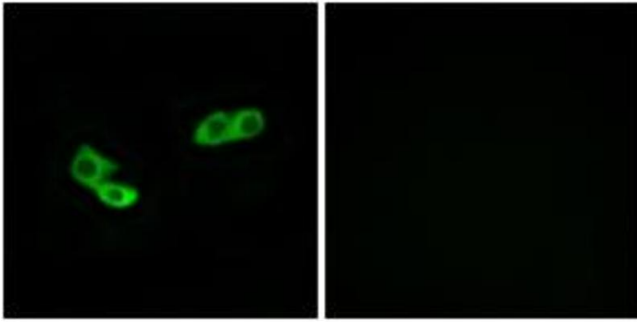
Preservative: Sodium azide

Precaution of Use: This product contains sodium azide: a POISONOUS AND HAZARDOUS SUBSTANCE which should be handled by trained staff only.

Storage: -20 °C

Storage Comment: Stable at -20°C for at least 1 year.

Expiry Date: 12 months



Immunofluorescence

Image 1. Immunofluorescence analysis of LOVO cells, using OR56A3 Antibody. The picture on the right is treated with the synthesized peptide.