

Datasheet for ABIN1536056
anti-OR2F2 antibody (AA 93-142)[Go to Product page](#)

1 Image

Overview

Quantity:	100 µg
Target:	OR2F2
Binding Specificity:	AA 93-142
Reactivity:	Human
Host:	Rabbit
Clonality:	Polyclonal
Conjugate:	This OR2F2 antibody is un-conjugated
Application:	Western Blotting (WB), ELISA

Product Details

Immunogen:	The antiserum was produced against synthesized peptide derived from human OR2F2.
Isotype:	IgG
Specificity:	OR2F2 Antibody detects endogenous levels of total OR2F2 protein.
Purification:	The antibody was purified from rabbit antiserum by affinity-chromatography using immunogen.
Purity:	> 95 %

Target Details

Target:	OR2F2
Alternative Name:	OR2F2 (OR2F2 Products)
Background:	Synonyms: Olfactory receptor 2F2, Olfactory receptor OR7-6, Olfactory receptor 7-1, OR7-1,

Target Details

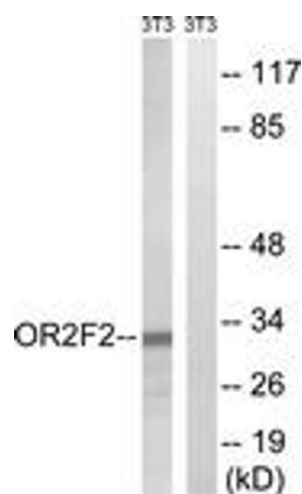
	OR2F2 NCBI Gene Symbol: OR2F2
Molecular Weight:	35 kDa
Gene ID:	135948
UniProt:	O95006

Application Details

Application Notes:	WB: 1:500~1:1000 ELISA: 1:10000
Comment:	Unigene-Number: Hs.553596 (NCBI Gene Symbol: OR2F2)
Restrictions:	For Research Use only

Handling

Format:	Liquid
Concentration:	1 mg/mL
Buffer:	phosphate buffered saline (without Mg ²⁺ and Ca ²⁺), pH 7.4, 150 mM NaCl, 0.02 % sodium azide and 50 % glycerol.
Preservative:	Sodium azide
Precaution of Use:	This product contains sodium azide: a POISONOUS AND HAZARDOUS SUBSTANCE which should be handled by trained staff only.
Storage:	-20 °C
Storage Comment:	Stable at -20°C for at least 1 year.
Expiry Date:	12 months



Western Blotting

Image 1. Western blot analysis of extracts from NIH-3T3 cells, using OR2F2 Antibody. The lane on the right is treated with the synthesized peptide.