



[Go to Product page](#)

Datasheet for ABIN1536064

## anti-OR5M1/5M10 antibody (AA 230-279)

### 2 Images

#### Overview

Quantity:	100 µg
Target:	OR5M1/5M10
Binding Specificity:	AA 230-279
Reactivity:	Human
Host:	Rabbit
Clonality:	Polyclonal
Conjugate:	This OR5M1/5M10 antibody is un-conjugated
Application:	Western Blotting (WB), ELISA, Immunofluorescence (IF)

#### Product Details

Immunogen:	The antiserum was produced against synthesized peptide derived from human OR5M1/5M10.
Isotype:	IgG
Specificity:	OR5M1/5M10 Antibody detects endogenous levels of total OR5M1/5M10 protein.
Purification:	The antibody was purified from rabbit antiserum by affinity-chromatography using immunogen.
Purity:	> 95 %

#### Target Details

Target:	OR5M1/5M10
Alternative Name:	OR5M1/5M10 ( <a href="#">OR5M1/5M10 Products</a> )
Background:	Synonyms: Olfactory receptor 5M1, Olfactory receptor OR11-208, OST050, Olfactory receptor

## Target Details

---

OR11-207  
NCBI Gene Symbol: OR5M10

Molecular Weight: 35 kDa

Gene ID: 390168, 390167

UniProt: [Q8NGP8](#), [Q6IEU7](#)

## Application Details

---

Application Notes: WB: 1:500~1:1000 IF: 1:100~1:500 ELISA: 1:10000

Comment: Unigene-Number: Hs.553751, Hs.553750 (NCBI Gene Symbol: OR5M10)

Restrictions: For Research Use only

## Handling

---

Format: Liquid

Concentration: 1 mg/mL

Buffer: phosphate buffered saline (without Mg<sup>2+</sup> and Ca<sup>2+</sup>), pH 7.4, 150 mM NaCl, 0.02 % sodium azide and 50 % glycerol.

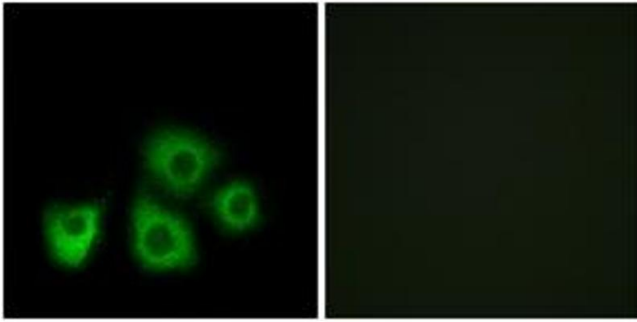
Preservative: Sodium azide

Precaution of Use: This product contains sodium azide: a POISONOUS AND HAZARDOUS SUBSTANCE which should be handled by trained staff only.

Storage: -20 °C

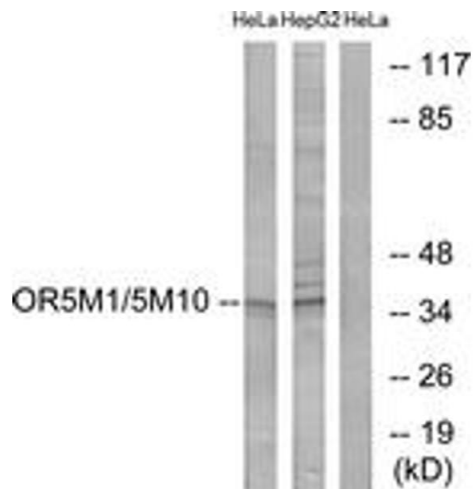
Storage Comment: Stable at -20°C for at least 1 year.

Expiry Date: 12 months



### Immunofluorescence

**Image 1.** Immunofluorescence analysis of MCF7 cells, using OR5M1/5M10 Antibody. The picture on the right is treated with the synthesized peptide.



### Western Blotting

**Image 2.** Western blot analysis of extracts from HeLa/HepG2 cells, using OR5M1/5M10 Antibody. The lane on the right is treated with the synthesized peptide.