

Datasheet for ABIN1536066
anti-OR6J1 antibody (AA 231-280)

2 Images

[Go to Product page](#)

Overview

Quantity:	100 µg
Target:	OR6J1
Binding Specificity:	AA 231-280
Reactivity:	Human
Host:	Rabbit
Clonality:	Polyclonal
Conjugate:	This OR6J1 antibody is un-conjugated
Application:	ELISA, Western Blotting (WB), Immunofluorescence (IF)

Product Details

Immunogen:	The antiserum was produced against synthesized peptide derived from human OR6J1.
Isotype:	IgG
Specificity:	OR6J1 Antibody detects endogenous levels of total OR6J1 protein.
Purification:	The antibody was purified from rabbit antiserum by affinity-chromatography using immunogen.
Purity:	> 95 %

Target Details

Target:	OR6J1
Alternative Name:	OR6J1 (OR6J1 Products)
Background:	Synonyms: Olfactory receptor 6J1, OR6J1, OR6J2

Target Details

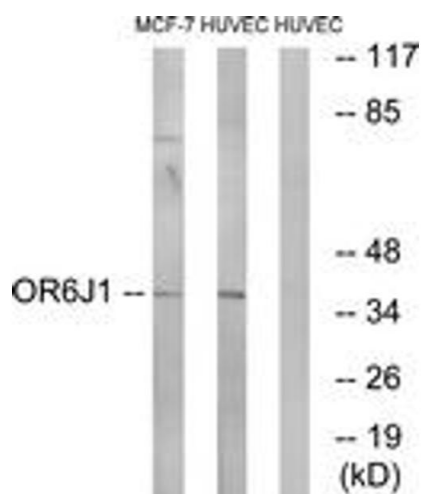
	NCBI Gene Symbol: OR6J1
Molecular Weight:	38 kDa
Gene ID:	79549
UniProt:	Q8NGC5

Application Details

Application Notes:	WB: 1:500~1:1000 IF: 1:100~1:500 ELISA: 1:10000
Comment:	Unigene-Number: Hs.632718 (NCBI Gene Symbol: OR6J1)
Restrictions:	For Research Use only

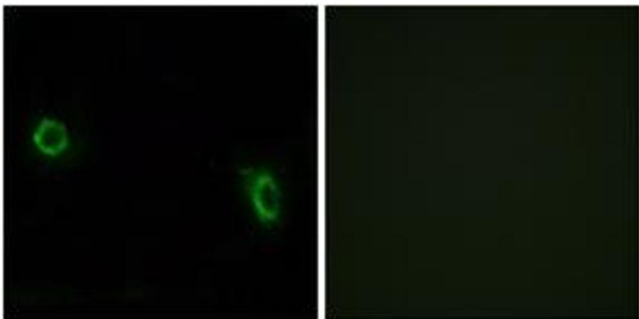
Handling

Format:	Liquid
Concentration:	1 mg/mL
Buffer:	phosphate buffered saline (without Mg ²⁺ and Ca ²⁺), pH 7.4, 150 mM NaCl, 0.02 % sodium azide and 50 % glycerol.
Preservative:	Sodium azide
Precaution of Use:	This product contains sodium azide: a POISONOUS AND HAZARDOUS SUBSTANCE which should be handled by trained staff only.
Storage:	-20 °C
Storage Comment:	Stable at -20°C for at least 1 year.
Expiry Date:	12 months



Western Blotting

Image 1. Western blot analysis of extracts from HuvEc/MCF-7 cells, using OR6J1 Antibody. The lane on the right is treated with the synthesized peptide.



Immunofluorescence

Image 2. Immunofluorescence analysis of MCF7 cells, using OR6J1 Antibody. The picture on the right is treated with the synthesized peptide.