

Datasheet for ABIN1536068
anti-OR8D1 antibody (AA 234-283)

2 Images

[Go to Product page](#)

Overview

Quantity:	100 µg
Target:	OR8D1
Binding Specificity:	AA 234-283
Reactivity:	Human
Host:	Rabbit
Clonality:	Polyclonal
Conjugate:	This OR8D1 antibody is un-conjugated
Application:	Western Blotting (WB), ELISA, Immunofluorescence (IF)

Product Details

Immunogen:	The antiserum was produced against synthesized peptide derived from human OR8D1.
Isotype:	IgG
Specificity:	OR8D1 Antibody detects endogenous levels of total OR8D1 protein.
Purification:	The antibody was purified from rabbit antiserum by affinity-chromatography using immunogen.
Purity:	> 95 %

Target Details

Target:	OR8D1
Alternative Name:	OR8D1 (OR8D1 Products)
Background:	Synonyms: Olfactory receptor 8D1, Olfactory receptor OR11-301, Olfactory receptor-like protein

Target Details

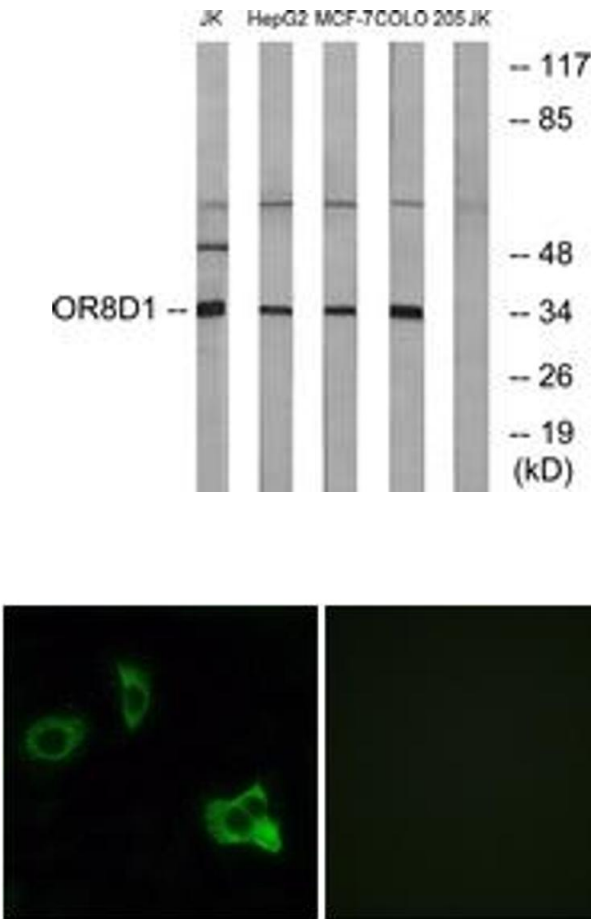
	JCG9, OST004, OR8D1, OR8D3 NCBI Gene Symbol: OR8D1
Molecular Weight:	34 kDa
Gene ID:	283159
UniProt:	Q8WZ84

Application Details

Application Notes:	WB: 1:500~1:1000 IF: 1:100~1:500 ELISA: 1:20000
Comment:	Unigene-Number: Hs.504211 (NCBI Gene Symbol: OR8D1)
Restrictions:	For Research Use only

Handling

Format:	Liquid
Concentration:	1 mg/mL
Buffer:	phosphate buffered saline (without Mg ²⁺ and Ca ²⁺), pH 7.4, 150 mM NaCl, 0.02 % sodium azide and 50 % glycerol.
Preservative:	Sodium azide
Precaution of Use:	This product contains sodium azide: a POISONOUS AND HAZARDOUS SUBSTANCE which should be handled by trained staff only.
Storage:	-20 °C
Storage Comment:	Stable at -20°C for at least 1 year.
Expiry Date:	12 months



Western Blotting

Image 1. Western blot analysis of extracts from Jurkat/HepG2/MCF-7/COLO cells, using OR8D1 Antibody. The lane on the right is treated with the synthesized peptide.

Immunofluorescence

Image 2. Immunofluorescence analysis of MCF7 cells, using OR8D1 Antibody. The picture on the right is treated with the synthesized peptide.