

Datasheet for ABIN1536073  
**anti-OR10X1 antibody (AA 216-265)**[Go to Product page](#)

## 2 Images

## Overview

Quantity:	100 µg
Target:	OR10X1
Binding Specificity:	AA 216-265
Reactivity:	Human
Host:	Rabbit
Clonality:	Polyclonal
Conjugate:	This OR10X1 antibody is un-conjugated
Application:	Western Blotting (WB), ELISA, Immunofluorescence (IF)

## Product Details

Immunogen:	The antiserum was produced against synthesized peptide derived from human OR10X1.
Isotype:	IgG
Specificity:	OR10X1 Antibody detects endogenous levels of total OR10X1 protein.
Purification:	The antibody was purified from rabbit antiserum by affinity-chromatography using immunogen.
Purity:	> 95 %

## Target Details

Target:	OR10X1
Alternative Name:	OR10X1 ( <a href="#">OR10X1 Products</a> )
Background:	Synonyms: Seven transmembrane helix receptor, OR10R3P

## Target Details

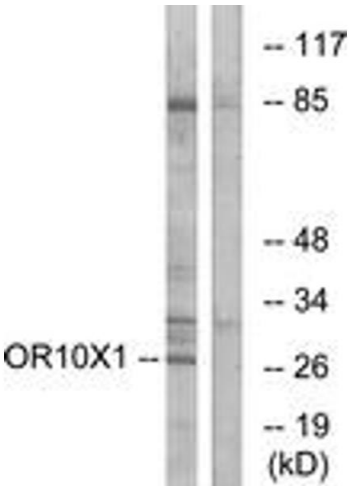
	NCBI Gene Symbol: OR10X1
Molecular Weight:	27 kDa
Gene ID:	128367
UniProt:	<a href="#">Q8NGY0</a> , <a href="#">Q8NGX7</a>

## Application Details

Application Notes:	WB: 1:500~1:1000 IF: 1:100~1:500 ELISA: 1:40000
Comment:	Unigene-Number: Hs.553589Hs., Hs.553748, Hs.64025 (NCBI Gene Symbol: OR10X1)
Restrictions:	For Research Use only

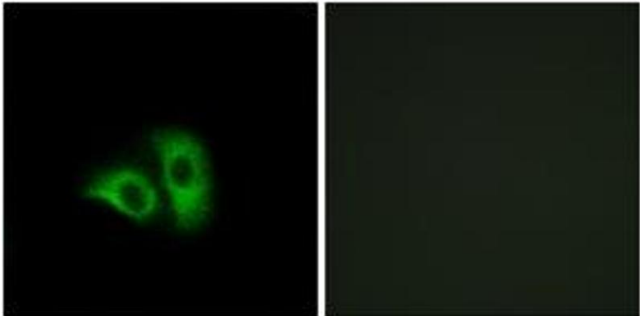
## Handling

Format:	Liquid
Concentration:	1 mg/mL
Buffer:	phosphate buffered saline (without Mg <sup>2+</sup> and Ca <sup>2+</sup> ), pH 7.4, 150 mM NaCl, 0.02 % sodium azide and 50 % glycerol.
Preservative:	Sodium azide
Precaution of Use:	This product contains sodium azide: a POISONOUS AND HAZARDOUS SUBSTANCE which should be handled by trained staff only.
Storage:	-20 °C
Storage Comment:	Stable at -20°C for at least 1 year.
Expiry Date:	12 months



#### Western Blotting

**Image 1.** Western blot analysis of extracts from COLO cells, using OR10X1 Antibody. The lane on the right is treated with the synthesized peptide.



#### Immunofluorescence

**Image 2.** Immunofluorescence analysis of A549 cells, using OR10X1 Antibody. The picture on the right is treated with the synthesized peptide.