

Datasheet for ABIN1536095

anti-NOTCH2 antibody (Cleaved-Asp1733)[Go to Product page](#)**2** Images

Overview

Quantity:	100 µL
Target:	NOTCH2
Binding Specificity:	AA 1684-1733, Cleaved-Asp1733
Reactivity:	Human, Mouse, Rat
Host:	Rabbit
Clonality:	Polyclonal
Conjugate:	This NOTCH2 antibody is un-conjugated
Application:	Western Blotting (WB), ELISA, Immunohistochemistry (IHC), Immunofluorescence (IF)

Product Details

Immunogen:	The antiserum was produced against synthesized peptide derived from human Notch 2.
Isotype:	IgG
Specificity:	Notch 2 (Cleaved-Asp1733) Antibody detects endogenous levels of fragment of activated Notch 2 resulting from cleavage adjacent to Asp1733.
Purification:	The antibody was purified from rabbit antiserum by affinity-chromatography using immunogen.
Purity:	> 95 %

Target Details

Target:	NOTCH2
Alternative Name:	Notch 2 (NOTCH2 Products)

Target Details

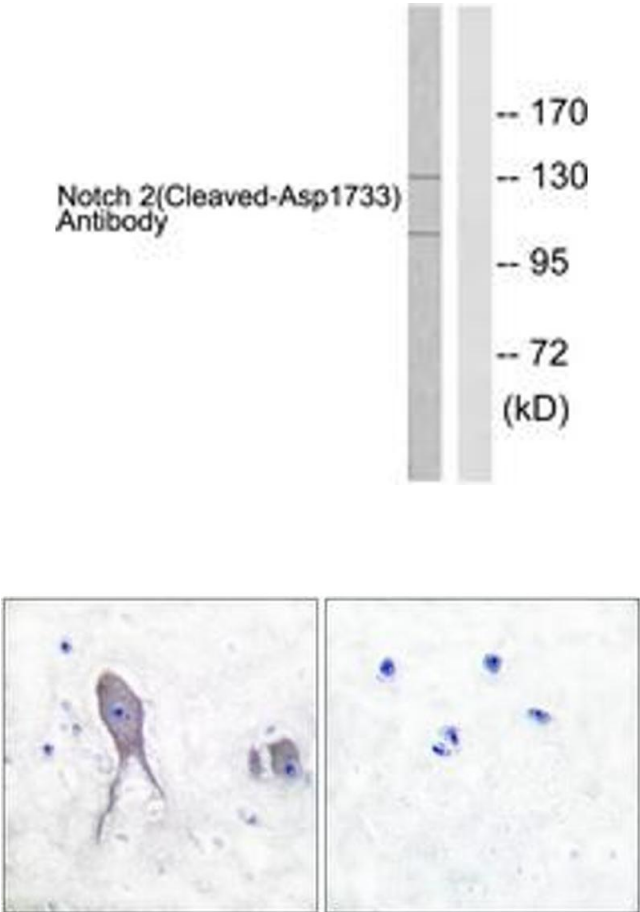
Background:	Synonyms: Motch B, NOTC2, NOTCH2, NTC2, Neurogenic locus notch homolog protein 2 precursor, Hn2 NCBI Gene Symbol: NOTCH2
Molecular Weight:	100 and 130 kDa
Gene ID:	4853
OMIM:	600275
UniProt:	Q04721
Pathways:	Notch Signaling , Stem Cell Maintenance

Application Details

Application Notes:	IF: 1:50-200 WB: 1:500-1:1000 IHC: 1:50-1:100 ELISA: 1:40000
Comment:	Unigene-Number: Hs.487360 (NCBI Gene Symbol: NOTCH2)
Restrictions:	For Research Use only

Handling

Format:	Liquid
Concentration:	1 mg/mL
Buffer:	phosphate buffered saline (without Mg2+ and Ca2+), pH 7.4, 150 mM NaCl, 0.02 % sodium azide and 50 % glycerol.
Preservative:	Sodium azide
Precaution of Use:	This product contains sodium azide: a POISONOUS AND HAZARDOUS SUBSTANCE which should be handled by trained staff only.
Storage:	-20 °C
Storage Comment:	Stable at -20°C for at least 1 year.
Expiry Date:	12 months



Western Blotting

Image 1. Western blot analysis of extracts from 293 cells, treated with TNF-a 20ng/ml 30', using Notch 2 (Cleaved-Asp1733) Antibody. The lane on the right is treated with the synthesized peptide.

Immunohistochemistry

Image 2. Immunohistochemistry analysis of paraffin-embedded human brain tissue, using Notch 2 (Cleaved-Asp1733) Antibody. The picture on the right is treated with the synthesized peptide.