



Datasheet for ABIN1536113  
**anti-Cathepsin L2 antibody (Cleaved-Leu114)**



[Go to Product page](#)

1 Image

Overview

Quantity:	100 µL
Target:	Cathepsin L2 (CTSL2)
Binding Specificity:	AA 95-144, Cleaved-Leu114
Reactivity:	Human
Host:	Rabbit
Clonality:	Polyclonal
Conjugate:	This Cathepsin L2 antibody is un-conjugated
Application:	Western Blotting (WB), ELISA

Product Details

Immunogen:	The antiserum was produced against synthesized peptide derived from human CATL2.
Isotype:	IgG
Specificity:	CATL2 (Cleaved-Leu114) Antibody detects endogenous levels of fragment of activated CATL2 resulting from cleavage adjacent to Leu114.
Purification:	The antibody was purified from rabbit antiserum by affinity-chromatography using immunogen.
Purity:	> 95 %

Target Details

Target:	Cathepsin L2 (CTSL2)
Alternative Name:	CATL2 ( <a href="#">CTSL2 Products</a> )

## Target Details

---

Background:	Synonyms: Cathepsin L2, Cathepsin V, Cathepsin U, CTSL2, CATL2, CTSU, CTSV, NCBI Gene Symbol: CTSL2
Molecular Weight:	37 kDa
Gene ID:	1515
OMIM:	603308
UniProt:	<a href="#">O60911</a>
Pathways:	<a href="#">Toll-Like Receptors Cascades</a>

## Application Details

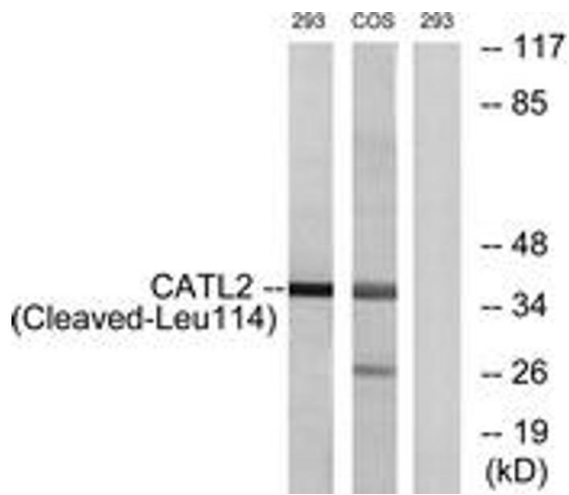
---

Application Notes:	WB: 1:500~1:1000 ELISA: 1:20000
Comment:	Unigene-Number: Hs.660866 (NCBI Gene Symbol: CTSL2)
Restrictions:	For Research Use only

## Handling

---

Format:	Liquid
Concentration:	1 mg/mL
Buffer:	phosphate buffered saline (without Mg <sup>2+</sup> and Ca <sup>2+</sup> ), pH 7.4, 150 mM NaCl, 0.02 % sodium azide and 50 % glycerol.
Preservative:	Sodium azide
Precaution of Use:	This product contains sodium azide: a POISONOUS AND HAZARDOUS SUBSTANCE which should be handled by trained staff only.
Storage:	-20 °C
Storage Comment:	Stable at -20°C for at least 1 year.
Expiry Date:	12 months



### Western Blotting

**Image 1.** Western blot analysis of extracts from 293/COS cells, treated with etoposide 25uM 1h, using CATL2 (Cleaved-Leu114) Antibody. The lane on the right is treated with the synthesized peptide.