

Datasheet for ABIN1536128

## anti-CTSC antibody (Cleaved-Arg394)



[Go to Product page](#)

### 1 Image

#### Overview

Quantity:	100 µL
Target:	CTSC
Binding Specificity:	AA 345-394, Cleaved-Arg394
Reactivity:	Human
Host:	Rabbit
Clonality:	Polyclonal
Conjugate:	This CTSC antibody is un-conjugated
Application:	Western Blotting (WB), ELISA

#### Product Details

Immunogen:	The antiserum was produced against synthesized peptide derived from human Dipeptidyl-peptidase 1.
Isotype:	IgG
Specificity:	Dipeptidyl-peptidase 1 (heavy chain,Cleaved-Arg394) Antibody detects endogenous levels of fragment of activated Dipeptidyl-peptidase 1 resulting from cleavage adjacent to Arg394.
Purification:	The antibody was purified from rabbit antiserum by affinity-chromatography using immunogen.
Purity:	> 95 %

#### Target Details

Target:	CTSC
---------	------

## Target Details

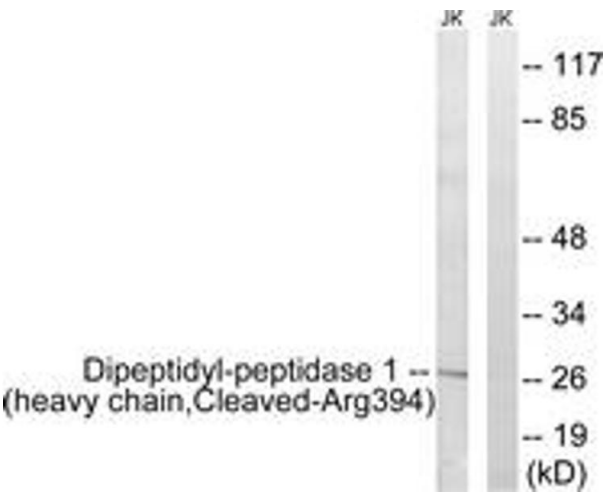
Alternative Name:	Dipeptidyl-Peptidase 1 ( <a href="#">CTSC Products</a> )
Background:	Synonyms: CATC, cathepsin C, cathepsin J, CPPI, dipeptidyl-peptidase 1, dipeptidyl-peptidase 1 heavy, dipeptidyl-peptidase 1 light, dipeptidyl-peptidase I, dipeptidyl-peptidase I exclusion domain, DPP-I, DPP1, DPPI, HMS, JP, JPD, PALS, PLS NCBI Gene Symbol: CTSC
Molecular Weight:	27 kDa
Gene ID:	1075
OMIM:	602365
UniProt:	<a href="#">P53634</a>

## Application Details

Application Notes:	WB: 1:500~1:1000 ELISA: 1:20000
Comment:	Unigene-Number: Hs.128065 (NCBI Gene Symbol: CTSC)
Restrictions:	For Research Use only

## Handling

Format:	Liquid
Concentration:	1 mg/mL
Buffer:	phosphate buffered saline (without Mg <sup>2+</sup> and Ca <sup>2+</sup> ), pH 7.4, 150 mM NaCl, 0.02 % sodium azide and 50 % glycerol.
Preservative:	Sodium azide
Precaution of Use:	This product contains sodium azide: a POISONOUS AND HAZARDOUS SUBSTANCE which should be handled by trained staff only.
Storage:	-20 °C
Storage Comment:	Stable at -20°C for at least 1 year.
Expiry Date:	12 months



Western Blotting

**Image 1.** Western blot analysis of extracts from Jurkat cells, treated with etoposide 25uM 1h, using Dipeptidyl-peptidase 1 (heavy chain,Cleaved-Arg394) Antibody. The lane on the right is treated with the synthesized peptide.