



[Go to Product page](#)

Datasheet for ABIN1536129

anti-Ephrin A2 antibody (Cleaved-Asn188)

1 Image

Overview

Quantity:	100 µg
Target:	Ephrin A2 (EFNA2)
Binding Specificity:	AA 139-188, Cleaved-Asn188
Reactivity:	Human, Mouse
Host:	Rabbit
Clonality:	Polyclonal
Conjugate:	This Ephrin A2 antibody is un-conjugated
Application:	Western Blotting (WB), ELISA

Product Details

Immunogen:	The antiserum was produced against synthesized peptide derived from human EFNA2.
Isotype:	IgG
Specificity:	EFNA2 (Cleaved-Asn188) Antibody detects endogenous levels of fragment of activated EFNA2 resulting from cleavage adjacent to Asn188.
Purification:	The antibody was purified from rabbit antiserum by affinity-chromatography using immunogen.
Purity:	> 95 %

Target Details

Target:	Ephrin A2 (EFNA2)
Alternative Name:	EFNA2 (EFNA2 Products)

Target Details

Background: Synonyms: Ephrin-A2, EPH-related receptor tyrosine kinase ligand 6, LERK-6, HEK7-ligand, HEK7-L, EFNA2, EPLG6, LERK6
NCBI Gene Symbol: EFNA2

Molecular Weight: 21 kDa

Gene ID: 1943

OMIM: 602756

UniProt: [O43921](#)

Application Details

Application Notes: WB: 1:500~1:1000 ELISA: 1:20000

Comment: Unigene-Number: Hs.532655 (NCBI Gene Symbol: EFNA2)

Restrictions: For Research Use only

Handling

Format: Liquid

Concentration: 1 mg/mL

Buffer: phosphate buffered saline (without Mg²⁺ and Ca²⁺), pH 7.4, 150 mM NaCl, 0.02 % sodium azide and 50 % glycerol.

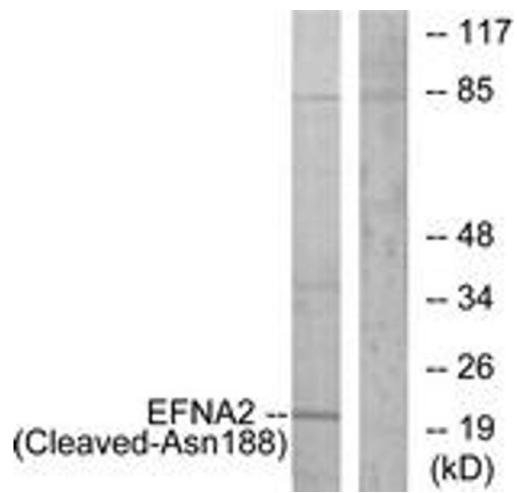
Preservative: Sodium azide

Precaution of Use: This product contains sodium azide: a POISONOUS AND HAZARDOUS SUBSTANCE which should be handled by trained staff only.

Storage: -20 °C

Storage Comment: Stable at -20°C for at least 1 year.

Expiry Date: 12 months



Western Blotting

Image 1. Western blot analysis of extracts from 293 cells, treated with etoposide 25uM 1h, using EFNA2 (Cleaved-Asn188) Antibody. The lane on the right is treated with the synthesized peptide.