

Datasheet for ABIN1536130

**anti-Factor VII antibody (Cleaved-Arg212)**[Go to Product page](#)**2** Images

## Overview

Quantity:	100 µL
Target:	Factor VII (F7)
Binding Specificity:	AA 171-220, Cleaved-Arg212
Reactivity:	Human
Host:	Rabbit
Clonality:	Polyclonal
Conjugate:	This Factor VII antibody is un-conjugated
Application:	Western Blotting (WB), Immunohistochemistry (IHC), ELISA

## Product Details

Immunogen:	The antiserum was produced against synthesized peptide derived from human FA7.
Isotype:	IgG
Specificity:	FA7 (light chain,Cleaved-Arg212) Antibody detects endogenous levels of fragment of activated FA7 resulting from cleavage adjacent to Arg212.
Purification:	The antibody was purified from rabbit antiserum by affinity-chromatography using immunogen.
Purity:	> 95 %

## Target Details

Target:	Factor VII (F7)
Alternative Name:	FA7 ( <a href="#">F7 Products</a> )

Target Details

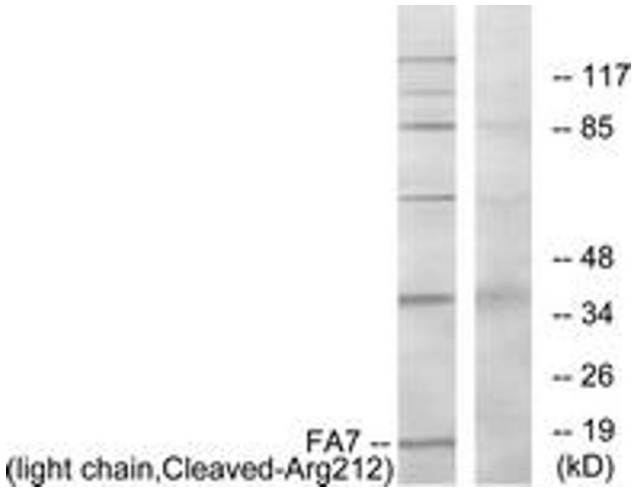
Background:	Synonyms: coagulation factor vii (serum prothrombin conversion accelerator), coagulation factor vii isoform a, coagulation factor vii isoform b, fa7, factor vii, fvii coagulation protein NCBI Gene Symbol: F7
Molecular Weight:	17 kDa
Gene ID:	2155
OMIM:	227500
UniProt:	<a href="#">P08709</a>
Pathways:	<a href="#">Response to Growth Hormone Stimulus</a> , <a href="#">Platelet-derived growth Factor Receptor Signaling</a>

Application Details

Application Notes:	WB: 1:500~1:1000 IHC: 1:50~1:100 ELISA: 1:20000
Comment:	Unigene-Number: Hs.36989 (NCBI Gene Symbol: F7)
Restrictions:	For Research Use only

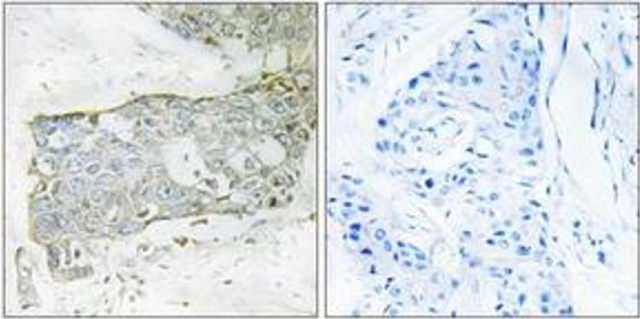
Handling

Format:	Liquid
Concentration:	1 mg/mL
Buffer:	phosphate buffered saline (without Mg2+ and Ca2+), pH 7.4, 150 mM NaCl, 0.02 % sodium azide and 50 % glycerol.
Preservative:	Sodium azide
Precaution of Use:	This product contains sodium azide: a POISONOUS AND HAZARDOUS SUBSTANCE which should be handled by trained staff only.
Storage:	-20 °C
Storage Comment:	Stable at -20°C for at least 1 year.
Expiry Date:	12 months



Western Blotting

**Image 1.** Western blot analysis of extracts from Jurkat cells, treated with eto 25uM 24h, using FA7 (light chain,Cleaved-Arg212) Antibody. The lane on the right is treated with the synthesized peptide.



Immunohistochemistry

**Image 2.** Immunohistochemistry analysis of paraffin-embedded human breast carcinoma tissue, using FA7 (light chain,Cleaved-Arg212) Antibody. The picture on the right is treated with the synthesized peptide.