

Datasheet for ABIN1536146  
**anti-MMP27 antibody (Cleaved-Tyr99)**[Go to Product page](#)

## 1 Image

## Overview

Quantity:	100 µg
Target:	MMP27
Binding Specificity:	AA 80-129, Cleaved-Tyr99
Reactivity:	Human
Host:	Rabbit
Clonality:	Polyclonal
Conjugate:	This MMP27 antibody is un-conjugated
Application:	Western Blotting (WB), ELISA

## Product Details

Immunogen:	The antiserum was produced against synthesized peptide derived from human MMP27.
Isotype:	IgG
Specificity:	MMP27 (Cleaved-Tyr99) Antibody detects endogenous levels of fragment of activated MMP27 resulting from cleavage adjacent to Tyr99.
Purification:	The antibody was purified from rabbit antiserum by affinity-chromatography using immunogen.
Purity:	> 95 %

## Target Details

Target:	MMP27
Alternative Name:	MMP27 ( <a href="#">MMP27 Products</a> )

## Target Details

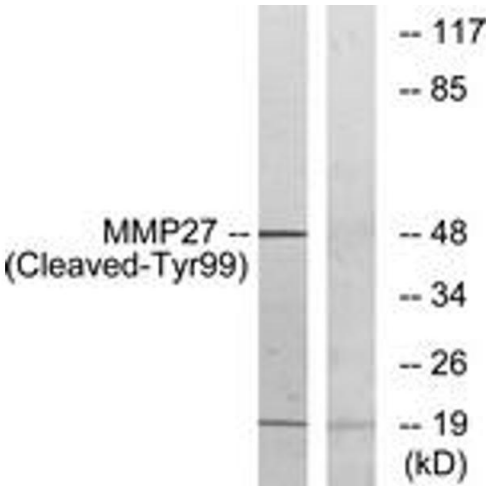
Background:	Synonyms: Matrix metalloproteinase-27, MMP-27, MMP27, NCBI Gene Symbol: MMP27
Molecular Weight:	48 kDa
Gene ID:	64066
UniProt:	<a href="#">Q9H306</a>

## Application Details

Application Notes:	WB: 1:500~1:1000 ELISA: 1:10000
Comment:	Unigene-Number: Hs.534479 (NCBI Gene Symbol: MMP27)
Restrictions:	For Research Use only

## Handling

Format:	Liquid
Concentration:	1 mg/mL
Buffer:	phosphate buffered saline (without Mg <sup>2+</sup> and Ca <sup>2+</sup> ), pH 7.4, 150 mM NaCl, 0.02 % sodium azide and 50 % glycerol.
Preservative:	Sodium azide
Precaution of Use:	This product contains sodium azide: a POISONOUS AND HAZARDOUS SUBSTANCE which should be handled by trained staff only.
Storage:	-20 °C
Storage Comment:	Stable at -20°C for at least 1 year.
Expiry Date:	12 months



Western Blotting

**Image 1.** Western blot analysis of extracts from COS7 cells, treated with etoposide 25uM 1h, using MMP27 (Cleaved-Tyr99) Antibody. The lane on the right is treated with the synthesized peptide.