

Datasheet for ABIN1536600
anti-CD20 antibody (C-Term)



[Go to Product page](#)

3 Images

Overview

Quantity:	400 µL
Target:	CD20 (MS4A1)
Binding Specificity:	AA 266-294, C-Term
Reactivity:	Human
Host:	Mouse
Clonality:	Monoclonal
Conjugate:	This CD20 antibody is un-conjugated
Application:	Western Blotting (WB), Immunohistochemistry (Paraffin-embedded Sections) (IHC (p))

Product Details

Immunogen:	This MS4A1/CD20 antibody is generated from mice immunized with a KLH conjugated synthetic peptide between 266-294 amino acids from the C-terminal region of human MS4A1/CD20.
Clone:	407CT20-1-2
Isotype:	IgG1
Purification:	This antibody is prepared by Saturated Ammonium Sulfate (SAS) precipitation followed by dialysis against PBS.

Target Details

Target:	CD20 (MS4A1)
Alternative Name:	MS4A1/CD20 (MS4A1 Products)

Target Details

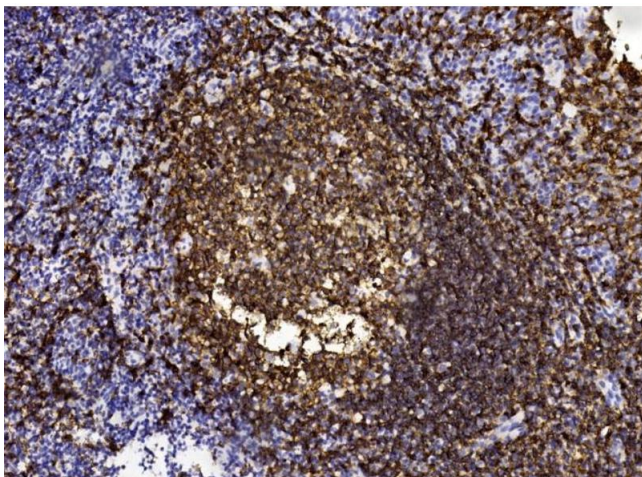
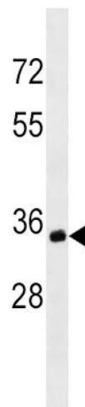
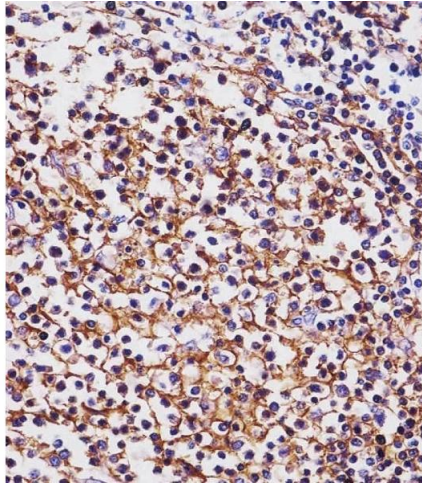
Background:	This gene encodes a member of the membrane-spanning 4A gene family. Members of this nascent protein family are characterized by common structural features and similar intron/exon splice boundaries and display unique expression patterns among hematopoietic cells and nonlymphoid tissues. This gene encodes a B-lymphocyte surface molecule which plays a role in the development and differentiation of B-cells into plasma cells. This family member is localized to 11q12, among a cluster of family members. Alternative splicing of this gene results in two transcript variants which encode the same protein.
Molecular Weight:	33077
Gene ID:	931
NCBI Accession:	NP_068769 , NP_690605
UniProt:	P11836

Application Details

Application Notes:	IHC: 1:1000. WB: 1:100~500. IHC-P: 1:100
Restrictions:	For Research Use only

Handling

Format:	Liquid
Buffer:	Purified polyclonal antibody supplied in PBS with 0.09 % (W/V) sodium azide.
Preservative:	Sodium azide
Precaution of Use:	This product contains Sodium azide: a POISONOUS AND HAZARDOUS SUBSTANCE which should be handled by trained staff only.
Storage:	4 °C,-20 °C
Storage Comment:	MS4A1/CD20 Antibody (C-term) can be refrigerated at 2-8 °C for up to 6 months. For long term storage, keep at -20 °C.
Expiry Date:	6 months



Immunohistochemistry (Paraffin-embedded Sections)

Image 1. (ABIN1536600 and ABIN2843823) staining MS4A1/CD20 in human tonsil tissue sections by Immunohistochemistry (IHC-P - paraformaldehyde-fixed, paraffin-embedded sections). Tissue was fixed with formaldehyde and blocked with 3 % BSA for 0.5 hour at room temperature, antigen retrieval was by heat mediation with a citrate buffer (pH 6). Samples were incubated with primary antibody (1/100) for 1 hour at 37 °C. A undiluted biotinylated goat polyvalent antibody was used as the secondary antibody.

Western Blotting

Image 2. MS4A1/CD20 Antibody (C-term) (ABIN1536600 and ABIN2843823) western blot analysis in Ramos cell line lysates (35 µg/lane). This demonstrates the MS4A1/CD20 antibody detected the MS4A1/CD20 protein (arrow).

Immunohistochemistry

Image 3. Immunohistochemical analysis of paraffin-embedded Human tonsil section using Pink1 (ABIN1536600 and ABIN2843823). (ABIN1536600 and ABIN2843823) was diluted at 1:1000 dilution. A undiluted biotinylated goat polyvalent antibody was used as the secondary, followed by DAB staining.