



[Go to Product page](#)

Datasheet for ABIN1536606
anti-LTB antibody (C-Term)

1 Image

Overview

Quantity:	0.1 mL
Target:	LTB
Binding Specificity:	AA 199-227, C-Term
Reactivity:	Human
Host:	Mouse
Clonality:	Monoclonal
Conjugate:	This LTB antibody is un-conjugated
Application:	Western Blotting (WB)

Product Details

Immunogen:	This LTB antibody is generated from mice immunized with a KLH conjugated synthetic peptide between 199-227 amino acids from the C-terminal region of human LTB.
Clone:	399CT9-3-4
Isotype:	IgM
Predicted Reactivity:	Pig
Purification:	Mouse monoclonal antibody supplied in crude ascites with 0.09% (W/V) sodium azide.

Target Details

Target:	LTB
Alternative Name:	LTB (LTB Products)

Target Details

Background: Lymphotoxin beta is a type II membrane protein of the TNF family. It anchors lymphotoxin-alpha to the cell surface through heterotrimer formation. The predominant form on the lymphocyte surface is the lymphotoxin-alpha 1/beta 2 complex (e.g. 1 Molecule alpha/2 Molecules beta) and this complex is the primary ligand for the lymphotoxin-beta receptor. The minor complex is lymphotoxin-alpha 2/beta 1. LTB is an inducer of the inflammatory response system and involved in normal development of lymphoid tissue. Lymphotoxin-beta isoform b is unable to complex with lymphotoxin-alpha suggesting a function for lymphotoxin-beta which is independent of lymphotoxin-alpha. Alternative splicing results in multiple transcript variants encoding different isoforms.

Molecular Weight: 25390

Gene ID: 4050

NCBI Accession: [NP_002332](#), [NP_033666](#)

UniProt: [Q06643](#)

Pathways: [NF-kappaB Signaling](#)

Application Details

Application Notes: WB: 1:2000~16000

Restrictions: For Research Use only

Handling

Format: Liquid

Buffer: Mouse monoclonal antibody supplied in crude ascites with 0.09 % (W/V) sodium azide.

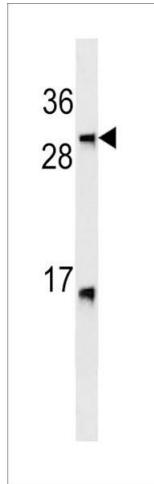
Preservative: Sodium azide

Precaution of Use: This product contains Sodium azide: a POISONOUS AND HAZARDOUS SUBSTANCE which should be handled by trained staff only.

Storage: 4 °C,-20 °C

Storage Comment: LTB Antibody (C-term)(Ascites) can be refrigerated at 2-8 °C for up to 6 months. For long term storage, keep at -20 °C.

Expiry Date: 6 months



Western Blotting

Image 1. LTB Antibody (C-term) ABIN1536606 western blot analysis in HL-60 cell line lysates (35 µg/lane). This demonstrates the LTB antibody detected the LTB protein (arrow).