

Datasheet for ABIN1536608
anti-Calcitonin antibody (AA 104-132)



[Go to Product page](#)

1 Image

Overview

Quantity:	0.1 mL
Target:	Calcitonin (Calca)
Binding Specificity:	AA 104-132
Reactivity:	Human
Host:	Mouse
Clonality:	Monoclonal
Conjugate:	This Calcitonin antibody is un-conjugated
Application:	Western Blotting (WB)

Product Details

Immunogen:	This CALCA/CT antibody is generated from mice immunized with a KLH conjugated synthetic peptide between 104-132 amino acids from human CALCA/CT.
Clone:	406CT21-4-3
Isotype:	IgM
Purification:	Mouse monoclonal antibody supplied in crude ascites with 0.09% (W/V) sodium azide.

Target Details

Target:	Calcitonin (Calca)
Alternative Name:	CALCA/CT (Calca Products)
Background:	This gene encodes the peptide hormones calcitonin, calcitonin gene-related peptide and

Target Details

katacalcin by tissue-specific alternative RNA splicing of the gene transcripts and cleavage of inactive precursor proteins. Calcitonin is involved in calcium regulation and acts to regulate phosphorus metabolism. Calcitonin gene-related peptide functions as a vasodilator while katacalcin is a calcium-lowering peptide. Multiple transcript variants encoding different isoforms have been found for this gene.

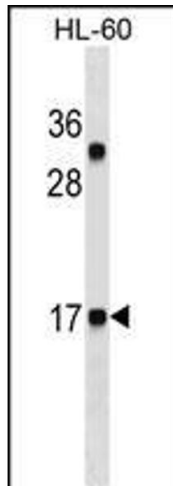
Molecular Weight:	15467
Gene ID:	796
NCBI Accession:	NP_001029124, NP_001732
UniProt:	P01258

Application Details

Application Notes:	WB: 1:1000~8000
Restrictions:	For Research Use only

Handling

Format:	Liquid
Buffer:	Mouse monoclonal antibody supplied in crude ascites with 0.09 % (W/V) sodium azide.
Preservative:	Sodium azide
Precaution of Use:	This product contains Sodium azide: a POISONOUS AND HAZARDOUS SUBSTANCE which should be handled by trained staff only.
Storage:	4 °C,-20 °C
Storage Comment:	CALCA/CT Antibody(Ascites) can be refrigerated at 2-8 °C for up to 6 months. For long term storage, keep at -20 °C.
Expiry Date:	6 months



Western Blotting

Image 1. CALCA/CT Antibody ABIN1536608 western blot analysis in HL-60 cell line lysates (35 µg/lane). This demonstrates the CALCA/CT antibody detected the CALCA/CT protein (arrow).